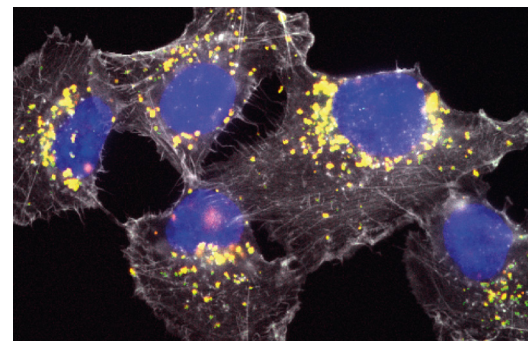




JAMES N. KIRBY
FOUNDATION



2019
FIFTY-SECOND
ANNUAL REPORT





Sir James Kirby CBE (1899 - 1971)

CONTENTS

CHAIRMAN’S REPORT	2
GRANTS MADE - THE YEAR IN REVIEW	5
SCHEDULE OF GRANTS	13
INCOME STATEMENT	28
BALANCE SHEET	29
CASH FLOW STATEMENT	30
INDEPENDENT AUDIT REPORT TO THE TRUSTEE	31
TRUSTEE DETAILS	33

Every year the James N. Kirby Foundation enjoys receiving a truly extraordinary amount of funding requests and this year was no exception.

With a little over one million dollars in grant funding the board worked tirelessly to see distributions through our Health, Education and Technology, Environment, Social Welfare and The Arts categories. The diversity of these requests are both enlightening and challenging and it is always a true credit to our board that they meet this challenge with passion and open mindedness.

We’ve been pleased to see some of the previous year’s large grant funding initiatives reach completion or come very close. Both the Chairman and a few board members attended the site for the HammondCare Homeless and Dementia building situated in Kings Cross. Due for completion before the end of this year HammondCare took us through the facility. Truly ground breaking. A facility that will lead the way in providing housing and assistance for the most vulnerable in our society.

I also had the pleasure of attending the opening night for The Australian Theatre for Young Peoples performance of “Follow Me Home”. A large grant was provided to ATYP so that this play could be produced and filmed. The subject matter of youth homelessness and how this looks from a young person’s perspective was both powerful in its story telling and eye opening to many in the room that night. The Foundations grant has also given them the opportunity to produce in classroom materials in order to distribute through NSW high schools. Finally, two of our board members attended Triple Care Farm, a rehabilitation centre in South NSW that provides extraordinary assistance to youth between the ages of 15-24 with both substance and mental health issues. The Foundation provides funding to The Sir David Martin Foundation to assist with student education for both accredited and non-accredited training. A day was spent being shown the facilities and getting to meet both the staff and the youth they work with.

On many of these forays the family board members are now taking with them the fourth generation. The next generation of The James N. Kirby Foundation. It has been wonderful to see how excited and keen they are to learn about, not only our Foundation, but more importantly, how The James N. Kirby Foundation assists the broad spectrum of health, education, social welfare, arts and environmental initiatives. Like their Great Grandfather, Sir James, the next generation is learning how important it is to “give something back”.

The James N. Kirby Foundation only accepts on-line applications for Small Grants - up to \$15K. Following greater levels of due diligence, larger projects that fit within the objectives of The Foundation are sourced and assessed, and below are the large grants subsequently approved by the Board in 2019:

\$60,000 Chris O’Brien Lifehouse

Funding to progress research into the discovery of a blood biomarker for glioblastoma multiforme, the most lethal brain cancer in adults.

\$50,000 Australian Schools Plus

To support five small schools in regional NSW to develop students’ critical thinking, creativity and problem-solving skills, to better equip them for high school and beyond. This project will build teachers’ skills to deliver a STEM learning program that develops students’ future-focused skills and improves teaching practice.

\$50,000 Sydney Story Factory

Towards ‘Changing Communities through Creative Writing’; change the lives of up to 300 young people in 1x disadvantaged Western Sydney community through the delivery of 3x concurrent, year-long creative writing residencies at 1x high school and 2x primary schools. To help students discover their creativity, build their confidence, and author an original piece of creative writing, which will be formally published.

\$40,000 KidsXpress

This funding will enable up to 600 teachers and education leaders to attend a full-day professional learning workshop which draws on current national and international research and best practice practical knowledge and skills to give insight, ideas and confidence in supporting students with even the most challenging of issues.

\$35,000 Lizard Island Reef Research Foundation

The next generation of marine scientists. Apart from students at a small number of private schools, Australian high school students have no access to on-reef education. This funding is towards a pilot program which will provide a competitive opportunity for exceptional high school biology students to participate in an education trip to Lizard Island Research Station.

\$30,000 Sir David Martin Foundation

An integral part of Triple Care Farm’s rehab program is the Vocation and Educational training for Life; a residential rehab program for 16-24 year olds struggling with substance and mental health issues. It helps to re-engage the ‘students’ in education and find pathways to employment. Funding is to assist with costly fees for both accredited and non-accredited training.

\$30,000 Youth Insearch

Inspire 3000. This funding will enable 10 more young participants to complete the intensive leadership training program. The training provides the personal development and skills needed to deliver the weekend workshops and support groups and work with challenging youth.

\$25,000 St Philip’s College

Towards a “Bridge to the Future” program. Boarding at St Philip’s College sits at 54 for 2019 (39 are Indigenous). It is the decline and poor retention rate of Indigenous boarding students that is a matter of concern to the College.

\$25,000 The Shepherd Centre

Towards ‘The Sound Start Initiative’ which prepares children, with hearing disabilities for the challenge of starting mainstream school and supports them when they are there. School Readiness groups prepare children for the challenge of adapting to and listening in class.

\$25,000 Monkey Baa Theatre Company

Edward the Emu Creative Development. Monkey Baa will undertake an intensive workshop process for EDWARD THE EMU. It is important that the students who participate in the creative development process have the opportunity to see the final work and many will visit the theatre for the first time.

The Foundation receives hundreds of applications each year, that are all carefully considered. Other than those who do not comply with the specific objectives of The Foundation, the demands placed upon our resources are

extremely challenging and, regrettably, many applications are denied. The Directors believe that the available funds of The Foundation have been appropriated in accordance with the objectives found on the website www.kirbyfoundation.com.au.

Audited financial statements of The Foundation for the year ended 30 June 2019 are presented in this Annual Report. In the opinion of the Directors of the Trustee, these statements are properly drawn up so as to give a true and fair view of the state of affairs of The Foundation and its results for the year ended on that date, and are in accordance with applicable Accounting Standards and the Trust Deed dated 17 October, 1967.

The Foundation’s gross income for the year ended 30 June 2019 was \$1,529,894 (2018 \$3,011,263) including donations received of \$391,801 (2018 \$2,097,000) with \$1,024,154 (2018 \$1,036,735) paid in grants during the year.

Since its inception in 1967, grants and donations totalling \$23,063,059 (2018 \$22,048,905) have been made by the Foundation. These fall into the following categories:

CATEGORY	2018/2019 \$	%	Total to 30 June 2019 \$	%
Health	\$187,500	18%	\$3,940,816	17%
Education and Technology	\$394,254	39%	\$9,133,085	40%
Environment	\$111,530	11%	\$1,303,377	5%
Social Welfare and The Arts	\$330,870	32%	\$8,685,781	38%
	\$1,024,154	100%	\$23,063,059	100%

In accordance with the Articles of the Trustee Company, Emeritus Professor Christine E Deer AM, Mr David W Smithers AM, Emeritus Professor Ross D Milbourne AO and Mr James T Hodgkinson OAM retire as Directors of the company but, being eligible, have offered themselves for re-election at the trustee company’s Annual General Meeting.

I would like to extend our sincere thanks and appreciation to the Directors for their sage guidance and assistance in allocating the income of The Foundation as a great deal of analysis is required to properly evaluate requests that are received. We also appreciate the continued contributions made by our honorary solicitor - Mr Ken Ramsay, our honorary auditor - Mr Alan Neilson, and honorary secretary - Mr Owen S Beattie. I would also like to acknowledge the considerable and compassionate contribution that Kay McDowall, Manager - Grants Administration, makes to The Foundation.



Margaret A Kirby
Vice Chairman of Trustee Directors

It is a compulsory condition that all grant recipients must provide annual progress and acquittal reports so that the James N. Kirby board can review the application of funds as well as the outcomes that our donations provide.

Some of last year’s grant recipients have graciously contributed to our Annual Report by giving further insight into their organisation and more specifically, their grant from The Foundation.

We are delighted to be able to profile these organisations over the next few pages followed by a summary of all grants made in 2019.



A young student at Waranwarin. Photo courtesy of ALNF.

EARLY LANGUAGE AND LITERACY PROGRAM MINTO, NEW SOUTH WALES. JUNE 2018 – JUNE 2019

ALNF's Early Language and Literacy (EL&L) Minto Project has been highly successful to date, and is strongly supported by participants, as well as parents, carers and the wider community at Waranwarin Early Childhood and Family Centre where the project is being delivered.

Funding from the James N. Kirby Foundation has enabled ALNF to train, mentor and resource 3 Indigenous educators to directly support 60 disadvantaged children to start school at the same baseline as their peers.

In the funding period, ALNF conducted 4 site visits to Minto in June and July 2018 and January and March 2019.

Each visit focused on a combination of the following objectives:

- Mentoring and training community members and educators in the EL&L program.
- Assisting with implementation of the program across learning environments and other needs.
- Delivering parent and community workshops to present pre-literacy strategies, games and activities.
- Assisting participants to conduct their own pre-literacy testing and analyse the results to implement appropriate strategies with children.
- Distributing resources as required.

“In the Jarjums room at Waranwarin we have seen a drastic improvement in the abilities of our children in relation to all areas of EL&L. We have seen children become more competent in letter shapes and have seen children making letters using playdough and identifying their sounds. Children have increased their oral language through our consistent use of the book packs for group times and exploring creative ways of telling their own stories with the use of the sentence cycle resource.

Overall the EL&L resources have helped our children become increasingly enthusiastic about their learning and has seen our children take big steps in their oral language and vocabulary development.”

All participants were provided with personal teaching resources expressly designed to address children's pre-literacy learning needs.

100% of participants who engaged in the program during the funding period have completed 4 Statements of Attainments towards a Certificate IV in Early Language and Literacy, and will be eligible to receive their Certificate IV after completing 100 hours of integrated EL&L practice.

The 3 Indigenous educators funded by the James N. Kirby Foundation have benefited from increased knowledge and skillsets, as well as improved pathways to employment through the acquisition of a Certificate IV.

In addition, Waranwarin Early Childhood and Family Centre was provided with over 200 books, and 84 Literacy Packs containing brand new, age appropriate stationery supplies to help children engage in home and school learning environments.

In Term 4, 2018, post-testing was conducted with participating children who had been pre-tested in Term 1, 2018 using the School Entry Alphabetic and Phonological Awareness Readiness Test (SEAPART). 86% of children improved their phonemic awareness, widely held to be one of the strongest single determinants of future reading

success, and an essential precursor to strong literacy acquisition during school and in later life.

Pre-testing for 2019 was conducted in Term 1, with post-test results available at the end of Term 4, 2019.

Ayla, a young Indigenous educator who has been supported by your funding, continues to see the positive impacts of the EL&L program in her work with children at the centre.

Thank you for your support in ensuring that disadvantaged Indigenous children in Minto have the skills required to become confident lifelong learners.

Kim Kelly
Co-Founder and Executive Director



Follow Me Home rehearsal. Photo courtesy of Erica Penollar.

It would not have been possible to stage *Follow Me Home* without the support of the James N. Kirby Foundation. ATYP believes this important new Australian play has the potential to make a significant impact by raising awareness of the experiences of young people who have experienced homelessness throughout NSW and across Australia.

The season at Riverside Theatres performed to sold-out schools audiences and attracted strong support from the general public. Over 923 people attended the six performances including representatives from the NSW State Government, Homeless Services, Education and Community Services.

The production was live-streamed to an audience of over 750 school students from around the country. This high definition broadcast was captured and will be lodged on ATYP's On Demand site over coming months, providing free access to all Australian schools.

In September ATYP has been invited to present at the national Performing Arts Centre annual showcase, a gathering of national venue managers, to pitch the production for national touring.

ATYP is also in continued discussion with the Office for the Advocate for Children and Young People who originally commissioned the work about State government support to tour the production through NSW regional communities.

Funding from the James N. Kirby Foundation enabled ATYP to contract and pay the staff required to bring this stunning new production to life.

Fraser Corfield
Artistic Director

Melanoma remains a major health issue in Australia - claiming one life every five hours. To achieve its mission, *Zero Deaths from Melanoma*, Melanoma Institute Australia (MIA) provides world-class care to melanoma patients, underpinned by internationally-recognised research.

A not-for-profit entity, MIA relies on philanthropy for essential equipment/technology. We are very grateful to James N. Kirby Foundation for funding the purchase of 200 Slide Loader, an integral addition to Vectra3.

At the cutting edge of treatment for melanoma and cancer generally, Vectra3, a spectral microscope/imaging software system, scans and quantifies multiple protein expressions in melanoma tissue. It represents the next-generation in pathology diagnostics.

from months to days. In high demand across all research projects, Vectra3 runs at full capacity for 150 hours/week, in contrast to 35 hours/week previously. Because early diagnosis is critical in melanoma (as in all cancer) treatment, it is no exaggeration to say that 200 Slide Loader is helping save lives.

200 Slide Loader is a robotic arm that automatically inserts/removes pathology slides containing thin biopsy tissue sections, allowing Vectra3 to photograph tumours for classification. Being able to study every cell within a patient's tumour to understand how melanoma cells are communicating with surrounding immune cells allows researchers to develop new anti-cancer immunotherapies as well as better predict and monitor a patient's response to these drugs. This would not be possible without James N. Kirby Foundation's generosity.

Dr James Wilmott
*Research Leader, Melanoma Pathology
Translational Research Group*



Vectra3 Microscope

200 Slide Loader

Not being able to afford 200 Slide Loader when we purchased Vectra3, we could not fully utilise Vectra3's capacity. Slides had to be loaded manually (a complicated, exacting task) and only 10 slides could be processed daily, thus greatly limiting the number of MIA's research projects Vectra3 supported. Due to James N. Kirby's generosity however, we can now load 200 slides at once, dramatically reducing the time needed to analyse patient tumours



Classroom resources designed to stimulate interest in music.

Music improves creativity, a vital priority in today's education context, to prepare students for the workplace of the future. Music overcomes cultural, social and language barriers and research shows that music education improves maths, literacy and social outcomes, bridging the divide between academic results of more privileged schools. Research demonstrates improvements in student attendance, engagement, alongside social and personal wellbeing.

The Western, North Western, and Riverina regions of NSW are experiencing significant and widespread drought and economic downturn. Additionally, the tremendous geographic size of this area creates significant access challenges for schools. This funding has been pivotal in ensuring that children from these remote and challenging regions access the music education that every child needs, with these performances often constituting a student's only exposure to professional live music.

Musica Viva In Schools provides live music performances through a combination of highly engaging and interactive ensembles, teacher professional development and classroom resources designed to stimulate interest in music whilst assisting education outcomes.

The James N. Kirby Foundation has supported student participation fees to live performances from Musica Viva In Schools ensembles for over 14,000 students from disadvantaged backgrounds. Funding has also provided comprehensive online teacher professional development and classroom resources to fully prepare teachers and students.

Musica Viva is extremely grateful to the James N. Kirby Foundation for supporting music education in the Western, North Western, and Riverina regions of New South Wales.

Thank you!

Hywel Sims
Chief Executive Officer



Senior Education Officer Leonore Glansbeek with a class in the Rainforest classroom.

Thanks to the vision of the James N. Kirby Foundation in supporting innovation in education, students at Taronga Zoo can now experience the wonder of the rainforest first-hand!

It has been a full year since the Taronga Institute of Science and Learning (The Institute) opened, and this unique space is proving itself as a collaborative hub, where great minds meet and great ideas are born and executed. Authentic learning experiences align with curriculum priority areas, reinforce conservation messaging and have an underlying focus on connecting students with wildlife and the environment. The Institute also showcases conservation role models, encouraging students to consider a career in STEM fields.

Three immersive habitat classrooms at The Institute provide an unparalleled learning environment and have transformed formal education at Taronga Zoo. The habitat classrooms, themed around the rainforest (generously supported by the James N. Kirby Foundation) woodland and desert environments, combine cutting edge technology with animal exhibits, translocating students to the animals' natural environment and giving them a unique opportunity to interact with wildlife.

In each room, animals move freely around the space and are conditioned to display natural behaviours, which generates curiosity in visiting students and encourages development of critical skills. More than 100,000 students per year engage in formal education programs at Taronga, and more than 20,000 students have enjoyed workshops in the immersive habitat classrooms to-date.

Home to Cotton-top tamarins, tortoises, Bleeding-heart pigeons and Nicobar pigeons, the rainforest classroom is the only classroom to exhibit exotic species. Student activities in the rainforest room include observation and cataloguing of animal behaviour and applying this information, using the STEM design process, to develop

enrichment for the animals. Feedback from students and teachers, has been overwhelmingly positive: the opportunity to learn through close observation of animals, in an environment closely mimicking their natural habitat is truly inspiring the next generation of conservationists.

Taronga Foundation thanks the James N. Kirby Foundation sincerely, for its ongoing support of Taronga's work at this critical time for wildlife conservation.

Dee Vodden
Trusts and Foundations Officer



Dorrigo Plateau Aboriginal Land Council workshop.

The Environmental Defenders Office is a non-government, not-for-profit community legal centre specialising in public interest environmental law. We provide expert legal advice to clients ranging from farmers and residents action groups to Aboriginal communities and national environmental organisations.

One of our core goals is providing access to justice, and so our Legal Education Outreach program takes a collaborative, community-focussed approach to building the capacity of people across NSW to promote, enhance and conserve our unique animals, plants, places and natural resources.

Through our free legal workshops, seminars and legal guides, we help people understand and navigate their involvement in decisions that affect their environment.

A recent major overhaul of NSW’s land-clearing and threatened species laws created a clear need in the community to understand the new regime and opportunities for them to have a say.

James N. Kirby Foundation’s investment assisted our Outreach Solicitors to deliver several community legal education workshops on the new native vegetation laws and Biodiversity Offsets Scheme. We partnered with the Nature Conservation Council to deliver workshops

in Tweed Heads, Ballina, Lismore and Byron Bay. We also delivered this workshop in Orange, Lawson and Port Macquarie.

We also conducted workshops in Kingscliff regarding State Significant Farmland and Inner West Sydney on key aspects of planning law reforms.

Our Outreach solicitors are also training and developing the next generation of planning and environmental lawyers, delivering the Planning and Environmental Law courses at 6 universities across Sydney, as well as hosting international delegations, professional development sessions, presenting at conferences and to groups including local Aboriginal Land Councils.

We are very grateful for the James N. Kirby Foundation’s support of our work to educate and empower local communities and provide access to justice to Australians from all walks of life wanting to protect our precious environment.

David Morris
Chief Executive Officer

SCHEDULE OF GRANTS 2019

SCHEDULE OF GRANTS

MADE DURING THE YEAR, HIGHLIGHTING THE MAJOR OBJECTIVE OF EACH CONTRIBUTION PLUS AMOUNT PAID IN 2018

HEALTH	2019 \$	2018 \$
ASYLUM SEEKERS CENTRE INC Towards a nutrition program; to ensure people seeking asylum in financial hardship do not go hungry.	5,000	15,000
AUSTRALIAN MITOCHONDRIAL DISEASE FOUNDATION Towards supporting a registered telehealth nurse to use the Mito helpline to help patients navigate the health system and connect them with the best suited services.	10,000	15,000
CHRIS O'BRIEN LIFEHOUSE Funding to progress research into the discovery of a blood biomarker for glioblastoma multiforme, the most lethal brain cancer in adults.	60,000	10,000
HEART RESEARCH INSTITUTE Research into why Aboriginal Australians with diabetes are vulnerable to heart failure and identifying potential treatments. This request for funding is towards a type of equipment that allows mapping of the cardiac nutrients in mouse models of diabetic hearts.	10,000	10,000
INALA To support the purchase of 14 specially designed sturdy, durable and manoeuvrable chairs for use in two of Inala's homes.	5,000	-
KIDSXPRESS This funding will enable up to 600 teachers and education leaders to attend a full-day professional learning workshop which draws on current national and international research and best practice practical knowledge and skills to give insight, ideas and confidence in supporting students with even the most challenging of issues.	40,000	-
ORYGEN, THE NATIONAL CENTRE OF EXCELLENCE IN YOUTH MENTAL HEALTH Year 2 of a 3 year study using Orygen's IPSed intervention for 200 young people with mental illness who require assistance with reconnecting to or staying in education.	5,000	40,000
POLIO AUSTRALIA INC To hire a community development worker to reach polio survivors and their carers in NSW and ACT through free workshops advertised through local papers, local radio, seniors' information media, community services, etc.	10,000	-

SCHEDULE OF GRANTS

MADE DURING THE YEAR, HIGHLIGHTING THE MAJOR OBJECTIVE OF EACH CONTRIBUTION PLUS AMOUNT PAID IN 2018

HEALTH	2019 \$	2018 \$
STEWART HOUSE 41 children aged 8-14 from Far West NSW (Broken Hill and Bourke regions) will have access to healthcare and wellbeing support through the Stewart House program.	15,000	10,000
SUGARBYHALF SugarByHalf's education program will collaborate with Cool Australia, who will help develop meaningful content for teachers to deliver to students about added sugar, putting healthy nutrition into classrooms across Australia.	7,500	-
TAD DISABILITY SERVICES This project will design and build custom bikes for children with a disability who cannot access the National Disability Insurance Scheme funding and for families who are experiencing financial hardship.	15,000	-
THE NORTHCOTT SOCIETY Northcott's Beverley Park Residence provides supported living for young adults with high physical and cognitive disabilities. The facility's outdoor recreation area is in urgent need of repairs, in particular outdoor shade covers that provide sun and UV protection.	5,000	-
OTHER	-	123,721
TOTAL HEALTH	187,500	223,721

SCHEDULE OF GRANTS

MADE DURING THE YEAR, HIGHLIGHTING THE MAJOR OBJECTIVE OF EACH CONTRIBUTION PLUS AMOUNT PAID IN 2018

EDUCATION AND TECHNOLOGY	2019 \$	2018 \$
ABORIGINAL LITERACY FOUNDATION INC The Bega Indigenous Tutorial and Learning Centre (BITLC), an extension of the ALF's Bairnsdale Tutorial Centre, will be a central hub for Indigenous after school tutorial classes and will also serve as a centre for students who have left school but who are still keen to improve their literacy skills in order to improve their chances at employment.	10,000	-
AUSTRALIAN ACADEMY OF TECHNOLOGICAL SCIENCES AND ENGINEERING To help deploy the proven STELR education program to more disadvantaged and remote Australian schools.	10,000	-
AUSTRALIAN OUTWARD BOUND Towards assisting a cohort of up to 15 disengaged Aboriginal young men aged 15-16 from Moree in western NSW to join Deadly Directions; a unique five day outdoor experiential learning program that provides them with opportunities to develop a range of soft skills, and have real life practice leading and working with others.	10,000	-
AUSTRALIAN SCHOOLS PLUS To support five small schools in regional NSW to develop students’ critical thinking, creativity and problem-solving skills, to better equip them for high school and beyond. This project will build teachers’ skills to deliver a STEM learning program that develops students’ future-focused skills and improves teaching practice.	50,000	-
BACKTRACK YOUTH WORKS BackTrack’s core education and training programs provide functional life skills development for youth in rural and regional areas. Under this program, youth participate in real work experience opportunities in the local agricultural sector. Whilst gaining hands-on work experience, youth receive tailored support to address their wellbeing needs.	15,000	-
CEREBRAL PALSY ALLIANCE Towards prevention of disability in indigenous communities. Cytomegalovirus (CMV) is a preventable cause of cerebral palsy and neurodevelopmental disability in babies and children. This funding will support the development of content for a module subset on CMV awareness and risk reduction strategies specifically for Aboriginal communities.	15,000	15,000

SCHEDULE OF GRANTS

MADE DURING THE YEAR, HIGHLIGHTING THE MAJOR OBJECTIVE OF EACH CONTRIBUTION PLUS AMOUNT PAID IN 2018

EDUCATION AND TECHNOLOGY	2019 \$	2018 \$
COUNTRY EDUCATION FOUNDATION OF AUSTRALIA The Connected Volunteers project means at a community level CEF can address factors affecting higher education participation for country students. This funding will increase support and resources provided to volunteers.	15,000	-
ENGINEERING AID AUSTRALIA Indigenous Australian Engineering Summer School (IAESS). Funds to be applied towards the cost of arranging and conducting two Indigenous Australian Engineering Schools, one to be held in Perth in July 2019 at Curtin University and the other in Sydney in January 2020 at Sydney University, attended by Indigenous High School students from around Australia at no cost to themselves.	15,000	15,000
THE UNIVERSITY OF NEWCASTLE - FACULTY OF ENGINEERING & BUILT ENVIRONMENT Funding will support the continued development of RoboCup Junior Hunter Region 2019-2020. The grant will fund the running of two regional events in July/August 2020 in Newcastle and the Central Coast. Funding will also go towards providing technical experts to hold hands-on intro workshops for teachers in low-SES schools to train students for competition.	15,000	-
GIANT STEPS AUSTRALIA Giant Steps runs a school and intervention services for children and young adults with a diagnosis of Autism Spectrum Disorder (ASD). This funding will assist in the renovations of 3 new additional classroom spaces to expand services and enable more children and young people with autism access to education.	10,000	-
HARDING MILLER EDUCATION FOUNDATION The HMEF provides scholarships for disadvantaged, high potential girls at government schools. Scholarships cover Years 9-12 and provide support to fulfil their potential, complete school and go on to further study. This funding is for 17 scholarships for indigenous, remotely located and disadvantaged, bright students in NSW.	14,450	-
LEARNING LINKS Reading for Life, an evidence-based program designed by a psychologist, teacher and speech pathologist to support primary school children with reading disorders.	8,895	-

————— SCHEDULE OF GRANTS —————

MADE DURING THE YEAR, HIGHLIGHTING THE MAJOR OBJECTIVE OF EACH
CONTRIBUTION PLUS AMOUNT PAID IN 2018

	2019	2018
EDUCATION AND TECHNOLOGY	\$	\$
NATIONAL INSTITUTE OF DRAMATIC ART (NIDA)		
To purchase six Apple MacBook Pros to ensure the technical theatre and stage management students are educated and in step with the technological changes that are happening across the arts, theatre, performance and events.	10,000	-
ROYAL INSTITUTE FOR DEAF AND BLIND CHILDREN		
Funding towards an accessibility audit. Technology has moved quickly and new tools are available to support RIDBC clients, staff and community members who are deaf or hard of hearing, are blind or have low vision to be able to access educational resources, research materials and other documents.	10,000	10,000
SDN CHILD AND FAMILY SERVICES PTY LIMITED		
Towards SDN’s pioneering Aboriginal and Torres Strait Islander Early Childhood Scholarships to help to reduce financial barriers for Aboriginal families to access quality education for their children in the formative years before school.	12,000	-
SHINE FOR KIDS CO-OPERATIVE LTD		
Towards ‘RISE Together Kempsey’ part of a wrap-around suite of services that supports young people with an incarcerated parent during extreme periods of vulnerability.	14,750	-
ST PHILIP’S COLLEGE		
Towards a “Bridge to the Future” program. Boarding at St Philip’s College sits at 54 for 2019 (39 are Indigenous). It is the decline and poor retention rate of Indigenous boarding students that is a matter of concern to the College.	25,000	-
SYDNEY STORY FACTORY		
Towards ‘Changing Communities through Creative Writing’; change the lives of up to 300 young people in 1x disadvantaged Western Sydney community through the delivery of 3x concurrent, year-long creative writing residencies at 1x high school and 2x primary schools. To help students discover their creativity, build their confidence, and author an original piece of creative writing, which will be formally published.	50,000	15,000
WESTERN SYDNEY UNIVERSITY - THE MARCS INSTITUTE FOR BRAIN, BEHAVIOUR AND DEVELOPMENT		
Funding to support a research study to improve surgical training delivery utilising a Smart-Glove device.	15,000	-

————— SCHEDULE OF GRANTS —————

MADE DURING THE YEAR, HIGHLIGHTING THE MAJOR OBJECTIVE OF EACH
CONTRIBUTION PLUS AMOUNT PAID IN 2018

	2019	2018
EDUCATION AND TECHNOLOGY	\$	\$
THE PYJAMA FOUNDATION		
Funding to strengthen the Love of Learning Program in NSW, where there are more than 22,000 children in out of home care. The Pyjama Foundation will be able to train 20 new volunteers who will be able to assist their child with learning to improve their academic results.	15,000	-
THE SHEPHERD CENTRE		
Towards ‘The Sound Start Initiative’ which prepares children, with hearing disabilities for the challenge of starting mainstream school and supports them when they are there. School Readiness groups prepare children for the challenge of adapting to and listening in class.	25,000	10,000
WINMALEE NEIGHBOURHOOD CENTRE INC.		
The project will deliver a minimum of ten financial literacy workshops for women to enable them to manage their money and improve their financial situation. These will include but not be limited to an early invention strategy to assess the most appropriate level of guidance from resources, formal financial literacy education programs to financial counselling and mentoring etc.	14,159	-
YOUTH OFF THE STREETS		
“Step Up” Alternative Education Program; will benefit disadvantaged youth to allow YOT’s to continue providing a flexible and supportive learning environment where disadvantaged young people can pursue further education, training and employment post-school.	15,000	15,000
OTHER	-	239,393
TOTAL EDUCATION AND TECHNOLOGY	394,254	319,393

SCHEDULE OF GRANTS

MADE DURING THE YEAR, HIGHLIGHTING THE MAJOR OBJECTIVE OF EACH CONTRIBUTION PLUS AMOUNT PAID IN 2018

ENVIRONMENT	2019 \$	2018 \$
AUSTRALIAN WILDLIFE CONSERVANCY Protecting Northern Quolls from Cane Toads. This trial is ground breaking and is at a scale not previously attempted. This grant will fund an innovative trial using cane toad legs to train Northern Quolls to avoid eating toads.	10,000	-
BUSH HERITAGE AUSTRALIA To support a Feral Animal Monitoring and Control program for pigs or foxes on Naree and Yantabulla. Surveys will be planned and undertaken.	12,530	11,000
KARRKAD KANJDJI TRUST Mimal Daluk (Women) Ranger Project. The Karrkad Kanjdji Trust (KKT) and Mimal Land Management Limited (Mimal) have partnered to develop a Daluk (Womens) Ranger Program. Funding is to support the daluk rangers in the necessary professional development needed to enhance the overall ranger program at Mimal.	10,000	5,000
LIZARD ISLAND REEF RESEARCH FOUNDATION The next generation of marine scientists. Apart from students at a small number of private schools, Australian high school students have no access to on-reef education. This funding is towards a pilot program which will provide a competitive opportunity for exceptional high school biology students to participate in an education trip to Lizard Island Research Station.	35,000	-
RAINFOREST RESCUE Towards purchasing a property; Lot 30 Cape Tribulation Road: strategically located to increase an established wildlife corridor and connect protected rainforest, this property connects to the Daintree National Park/World Heritage Area through prior rescues. Lot 30 will extend the Rainforest Rescue Cape Kimberley Wildlife Corridor.	15,000	-
SOUTH COAST WOMEN’S HEALTH AND WELFARE ABORIGINAL CORPORATION - WAMINDA Towards Kareela Ngura Permaculture and Bush Tucker Garden. Kareela Ngura (Country of trees and water) is Waminda’s environmental program, addressing community and environmental issues by combining local Indigenous knowledge and practices with permaculture into one community hub.	15,000	-

SCHEDULE OF GRANTS

MADE DURING THE YEAR, HIGHLIGHTING THE MAJOR OBJECTIVE OF EACH CONTRIBUTION PLUS AMOUNT PAID IN 2018

ENVIRONMENT	2019 \$	2018 \$
THE WARREN CENTRE FOR ADVANCED ENGINEERING - UNIVERSITY OF SYDNEY Towards ‘The Circular Economy’. Globally, there is a recognition that single use plastics and various unrecycled/unrecyclable materials are accumulating in landfills and being released to the oceans. This project would produce a series of real world case examples where Circular Economy concepts have been demonstrated and promote those innovations via communications and social media to change Australia’s perceptions.	14,000	-
OTHER	-	93,500
TOTAL ENVIRONMENT	111,530	109,500

SCHEDULE OF GRANTS

MADE DURING THE YEAR, HIGHLIGHTING THE MAJOR OBJECTIVE OF EACH CONTRIBUTION PLUS AMOUNT PAID IN 2018

	2019	2018
SOCIAL WELFARE AND THE ARTS	\$	\$
ACT FOR KIDS LIMITED		
Funding to go towards therapeutic assessments and resources for use in the Blacktown Integrated Therapy Service. The Blacktown service provides assessment and therapy for children who have suffered trauma as a result of child abuse and neglect.	4,642	-
AUSTRALIAN REFUGEE VOLUNTEERS INC		
Providing funding for the recreational and developmental programs for the children of refugee and asylum seeker families in Sydney’s Western suburbs, including workshops, sport days and holiday camps. ARV’s Kids Program is specifically designed for children from refugee and asylum seeker families aged 6 - 11 years.	8,600	-
AUSTRALIAN YOUTH ORCHESTRA		
To support two major music training projects in 2019. The first of these is to be staged at the Sydney Opera House and will enable 90 young musicians aged 14 to 25 to demonstrate their excellence as the Australian Youth Orchestra. The second project is a regional tour to perform at the Upper Hunter Conservatorium of Music in Muswellbrook.	10,000	10,000
BARNARDOS AUSTRALIA		
Towards supporting the Bundaleer Better Futures program which aims to ensure children and young people on the estate are safe from harm, engaged with education, have positive role models, are healthy and active, emotionally stable, and connected with the broader community.	5,000	10,000
CARESOUTH		
Towards supporting the scale up of an existing educational mentoring program, the ‘Homework Hub’ and health check program the ‘Health Hub’ to other regions where they work; Deniliquin, Wagga-Wagga, Goulburn and the Shoalhaven.	10,000	-
FAR SOUTH COAST FAMILY SUPPORT SERVICE INC		
Towards supporting ‘Just for Mums and Carers’ which is a weekly activity group designed to engage mothers and carers of young children (0 - 5 years) who are socially isolated, often sole parents and experiencing economic hardship. A separate program of activities is provided for the children attending, delivered by a qualified and experienced early childhood educator.	7,720	-

SCHEDULE OF GRANTS

MADE DURING THE YEAR, HIGHLIGHTING THE MAJOR OBJECTIVE OF EACH CONTRIBUTION PLUS AMOUNT PAID IN 2018

	2019	2018
SOCIAL WELFARE AND THE ARTS	\$	\$
FIGHTING CHANCE AUSTRALIA LIMITED		
Fighting Chance’s new group home has four residents with profound and severe disability. This funding will go towards the provision of 12 months of a dedicated wheelchair accessible vehicle, plus a budget to subsidise their access to other forms of transport, enabling access to their community and improving quality of life.	15,000	15,000
GONDWANA CHOIRS		
Gondwana National Choral School is the leading destination for young musicians from across Australia to develop their performance skills and access the highest level of musical training. Each January, 330 young singers, composers and conductors undertake intensive rehearsals, electives and performances led by Australia’s leading artists. Funding will go towards providing National Choral School bursaries.	10,000	15,000
GUNAWIRRA		
Towards the Umbarra Black Duck Dreaming. This project provides the Aboriginal Little Yuin community, preschool children, elders, parents and teachers with opportunities to participate in Aboriginal Culture and Art activities to recover identity and self-respect, healing trauma.	15,000	50,000
HOLDSWORTH ST COMMUNITY CENTRE WOOLLAHRA INC		
Towards drama workshops for people with disability. Drama at Holdsworth focuses on a range of dramatic skills such as movement, verbal and non-verbal expression, creative communication, developing ideas, storytelling and working as a team to deliver a shared project.	15,000	10,000
KALDOR PUBLIC ART PROJECTS		
Towards Professional development for artists with disability. The programs aim to open avenues for participation and professional development for targeted groups who experience significant barriers to access.	12,000	-
KARINYA HOUSE HOME FOR MOTHERS AND BABIES INC		
Towards supporting the implementation of ‘The Outcomes Star’. The Outcomes Star™ is an evidence-based tool for both supporting and measuring change.	15,000	15,000

SCHEDULE OF GRANTS

MADE DURING THE YEAR, HIGHLIGHTING THE MAJOR OBJECTIVE OF EACH CONTRIBUTION PLUS AMOUNT PAID IN 2018

	2019	2018
SOCIAL WELFARE AND THE ARTS	\$	\$
KIDS GIVING BACK		
Towards believing, belonging and becoming program. This program will support marginalised young people to develop a sense of self efficacy engendering belief in their own capacity to help others and provides opportunities to help other vulnerable people through visits and engagement in practical assistance activities.	12,500	5,350
MILK CRATE THEATRE		
Building on 2018 workshops, Milk Crate Theatre will present a major performance work, Natural Order, during Homelessness Month, August 2019 at Petersham Town Hall; a collaborative project encompassing film, live theatre, movement, projection and sound, responding to themes of social order, hierarchy, and social mobility.	10,000	10,000
MONKEY BAA THEATRE COMPANY		
Edward the Emu Creative Development. Monkey Baa will undertake an intensive workshop process for EDWARD THE EMU. It is important that the students who participate in the creative development process have the opportunity to see the final work and many will visit the theatre for the first time.	25,000	10,000
MULTICAP LIMITED		
Supported accommodation for people with disabilities who are transitioning from hospital, or whose behaviours require more intensive support than what can be provided in their family home.	10,000	-
MUSICA VIVA AUSTRALIA		
Musica Viva In Schools will deliver a live music education program in Western NSW. Component 1, is a live music program and component 2, is professional development for teachers.	10,000	10,000
PATHFINDERS LTD		
Yarn-Up for Young Girls - Standing Strong, a program engaging young Aboriginal girls offering socialisation, life skills, cultural expression through art, craft and dance, opportunities to participate in community events, and access to information about a range of youth issues including sexual health, drugs and alcohol.	7,705	-

SCHEDULE OF GRANTS

MADE DURING THE YEAR, HIGHLIGHTING THE MAJOR OBJECTIVE OF EACH CONTRIBUTION PLUS AMOUNT PAID IN 2018

	2019	2018
SOCIAL WELFARE AND THE ARTS	\$	\$
REDKITE		
Cancer journey program NSW. This program provides vital emotional, financial and education support to children and young people with cancer, and their families.	5,000	10,000
REFUGEE ADVICE AND CASEWORK SERVICE		
Legal Support Services for Refugees. This project provides free, critical and specialised legal services to vulnerable and financially disadvantaged refugees in NSW who, despite being recognised as refugees by the Australia Government will only ever be granted Temporary Protection visas. Indefinitely, every 3 - 5 years they must re-apply to be recognised as a refugee.	5,000	-
SIR DAVID MARTIN FOUNDATION		
An integral part of Triple Care Farm’s rehab program is the Vocation and Educational training for Life; a residential rehab program for 16 - 24 year olds struggling with substance and mental health issues. It helps to re-engage the ‘students’ in education and find pathways to employment. Funding is to assist with costly fees for both accredited and non-accredited training.	30,000	15,000
STEPPING STONE HOUSE		
My first job - to expand their network of supportive employers willing to provide entry level employment for their 16 to 18 year olds.	10,000	-
SUPPORTED ACCOMMODATION AND HOMELESSNESS SERVICES SHOALHAVEN ILLAWARRA		
Towards child safety in crisis accommodation. SAHSSI provides short term accommodation to homeless women and children across the Illawarra and Shoalhaven.	12,800	-
THE BELL SHAKESPEARE COMPANY LIMITED		
Towards the in-school performance program 2019. In-school performances are dynamic 50-minute adaptations of Shakespeare’s most famous plays, delivered in school gyms and halls around the country.	10,000	-
THE GIRLS AND BOYS BRIGADE		
The Surry Hills Youth Service; a holistic approach to supporting young people’s transition to adulthood by providing practical programs and individual support.	10,000	13,000

SCHEDULE OF GRANTS

MADE DURING THE YEAR, HIGHLIGHTING THE MAJOR OBJECTIVE OF EACH CONTRIBUTION PLUS AMOUNT PAID IN 2018

	2019	2018
SOCIAL WELFARE AND THE ARTS	\$	\$
WENTWORTH COMMUNITY HOUSING		
Ending rough sleeping in the Hawkesbury. To support a part-time assertive outreach worker for 3 months to assist people who are homeless transition from tent villages in the Hawkesbury to housing.	14,903	-
YOUTH INSEARCH		
Inspire 3000. This funding will enable 10 more young participants to complete the intensive leadership training program. The training provides the personal development and skills needed to deliver the weekend workshops and support groups and work with challenging youth.	30,000	10,000
OTHER	-	175,771
TOTAL SOCIAL WELFARE AND THE ARTS	330,870	384,121
GRAND TOTAL	1,024,154	1,036,735

FINANCIAL REVIEW

2019

JAMES N. KIRBY FOUNDATION
INCOME STATEMENT
FOR THE YEAR ENDED 30 JUNE 2019

	2019 \$	2018 \$
SURPLUS/(DEFICIT) excluding result of fluctuation in value of investments		
INCOME		
Investment Income		
Dividends	604,319	491,212
Trust distributions	199,865	122,077
Imputation credit refund	232,217	163,277
Bank interest	91,692	100,697
	1,128,093	877,263
Donations Received	391,801	2,097,000
Grant Returned	10,000	37,000
TOTAL above income	1,529,894	3,011,263
LESS: EXPENDITURE		
Expenses		
Administration Fee	117,500	117,500
Bank charges	705	393
Catering	1,470	735
Database	3,985	4,679
Government charges	195	48
Insurance cover for directors liability	2,272	2,177
Investment administration	42,000	31,936
Printing	5,079	5,075
Subscriptions	1,230	2,938
50th Anniversary function	0	22,649
	174,436	188,131
Grants Paid	1,024,154	1,036,735
TOTAL above expenditure	1,198,590	1,224,866
NET above income	331,303	1,786,397
RESULT of fluctuation in value of investments		
Net profit/(loss) on sale of investments	2,553,410	980,316
Net increase/(decrease) in value of investments	(2,220,270)	(302,786)
NET fluctuation	333,139	677,530
OPERATING SURPLUS for the year	664,443	2,463,927

JAMES N. KIRBY FOUNDATION
BALANCE SHEET
AS AT 30 JUNE 2019

	2019 \$	2018 \$
CURRENT ASSETS		
Cash and cash equivalents	3,531,459	3,770,498
Sundry debtors	291,865	235,311
TOTAL current assets	3,823,324	4,005,809
NON-CURRENT ASSETS		
Investments (at market value)		
Listed shares (Cost \$9,448,959 (2018 - \$8,399,588))	12,261,361	12,009,780
Unlisted units (Cost \$3,017,652 (2018 - \$2,463,514))	3,037,145	2,442,572
TOTAL non-current assets	15,298,506	14,452,352
TOTAL assets	19,121,830	18,458,161
CURRENT LIABILITIES		
Creditors	(4,867)	(4,093)
TOTAL current liabilities	(4,867)	(4,093)
TOTAL liabilities	(4,867)	(4,093)
NET ASSETS	19,126,697	18,462,255
TRUST FUND		
Opening balance	18,462,255	15,998,327
Operating surplus for the year	664,443	2,463,927
CLOSING BALANCE	19,126,697	18,462,255

NOTES:

- The financial statements have been presented in accordance with the recognition and measurement principles of applicable Accounting Standards and the Trust Deed.
- In line with these Standards, investments are included based on market values (taken to be redemption values in the case of unlisted units).
- Dividends from foreign investments have been included in investment income net of withholding taxes ((\$1,599; 2018 \$385))
- All donations received were from the Kirby family directors of the trustee, James N. Kirby Foundation Limited, and entities associated with these directors. One such entity charged the administration fee.

JAMES N. KIRBY FOUNDATION

CASH FLOW STATEMENT

AS AT 30 JUNE 2019

	2019 \$	2018 \$
CASH FLOWS from operating activities		
Receipts from donations	391,801	2,097,000
Returned grants	10,000	37,000
Dividends, franking credits, distributions and interest	920,952	808,225
Payments made to suppliers	(173,288)	(195,559)
Grants paid	(1,024,154)	(1,036,735)
NET CASH INFLOW/(OUTFLOW) from operating activities	125,311	1,709,931
CASH FLOWS from investing activities		
Payments for the purchase of investments at fair value	(4,722,467)	(4,867,468)
Proceeds from the sale of investments	4,358,118	2,753,522
NET CASH INFLOW/(OUTFLOW) from investing activities	(364,350)	(2,113,946)
Net increase/(decrease) in cash and cash equivalents	(239,039)	(404,015)
Cash and cash equivalents at beginning of year	3,770,498	4,174,513
CASH AND CASH EQUIVALENTS at end of year	3,531,459	3,770,498

JAMES N. KIRBY FOUNDATION

INDEPENDENT AUDIT REPORT TO THE TRUSTEE

AUDIT OPINION

In my opinion, the accompanying financial report of James N. Kirby Foundation (the Trust):

- gives a true and fair view of the financial position of the Trust as at 30 June 2019 and of its financial performance for the year then ended; and
- is presented in accordance with the recognition and measurement principles of applicable Accounting Standards and the Trust Deed dated 17 October 1967.

SCOPE

THE FINANCIAL REPORT AND TRUSTEE’S RESPONSIBILITY

The financial report is a special purpose financial report comprising the balance sheet (including changes in the Trust Fund), income statement, cash flow statement, notes and the declaration by directors of the trustee for the Trust for the year ended 30 June 2019 and has been prepared solely for its trustee in accordance with the requirements of the Trust Deed. As a result, it may not be suitable for another purpose and my report should not be distributed to or used by parties other than the trustee.

The trustee of the Trust is responsible for the preparation and true and fair presentation of the financial report in accordance with the Trust Deed. This includes responsibility for the maintenance of adequate accounting records and internal controls that are designed to prevent and detect fraud and error, and for the accounting policies and accounting estimates inherent in the financial report.

AUDIT APPROACH

I conducted an independent audit in order to express an opinion solely to the trustee of the Trust. My audit was conducted in accordance with Australian Auditing Standards, in order to provide reasonable assurance as to whether the financial report is free of material misstatement. The nature of an audit is influenced by factors such as the use of professional judgement, selective testing, the inherent limitations of internal control, and the availability of persuasive rather than conclusive evidence. Therefore, an audit cannot guarantee that all material misstatements have been detected.

I performed procedures to assess whether in all material respects the financial report presents fairly, in accordance with the recognition and measurement principles of applicable Accounting Standards and the Trust Deed, a view which is consistent with my understanding of the Trust’s financial position and performance. I formed my audit opinion on the basis of these procedures, which included examining, on a test basis, information to provide evidence supporting the amounts in the financial report and assessing the reasonableness of significant accounting estimates made by the trustee or management of the Trust.

My audit did not involve an analysis of the prudence of business decisions made by the trustee or management of the Trust, nor was it designed to provide assurance on internal controls.

JAMES N. KIRBY FOUNDATION
INDEPENDENT AUDIT REPORT TO THE TRUSTEE

INDEPENDENCE

In conducting my audit, I followed applicable independence requirements of Australian professional and ethical pronouncements.

Dated at Sydney the eighteenth day of September 2019



Alan S Neilson
Chartered Accountant

JAMES N. KIRBY FOUNDATION
ABN 27 048 553 927

Established on 17 October 1967, the James N. Kirby Foundation is a Private Ancillary Fund listed as Item 99 in Regulation 995-1.02 of the Income Tax Assessment Regulations 1997

TRUSTEE

James N. Kirby Foundation Limited
ABN 11 008 458 277

TRUSTEE DIRECTORS

Mr James R Kirby - *Chairman*
Ms Margaret A Kirby - *Vice Chairman*
Mr Michael J Kirby
Ms Helen J Kirby
Emeritus Professor Christine E Deer AM
Mr James T Hodgkinson OAM
Emeritus Professor Ross D Milbourne AO
Mr David W Smithers AM

MANAGER - GRANTS ADMINISTRATION

Ms Kay L McDowall

HONORARY AUDITOR

Mr Alan S Neilson - *Chartered Accountant*

HONORARY SECRETARY

Mr Owen S Beattie

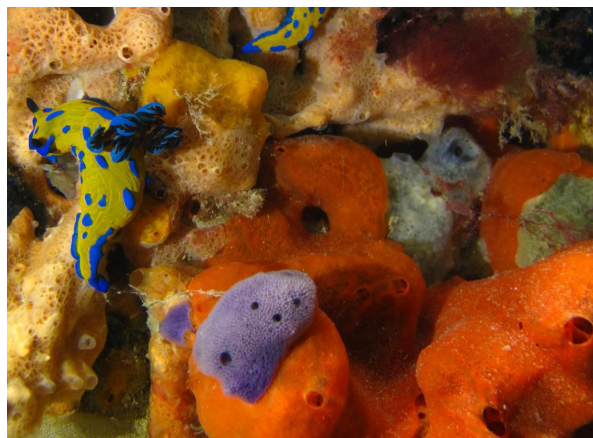
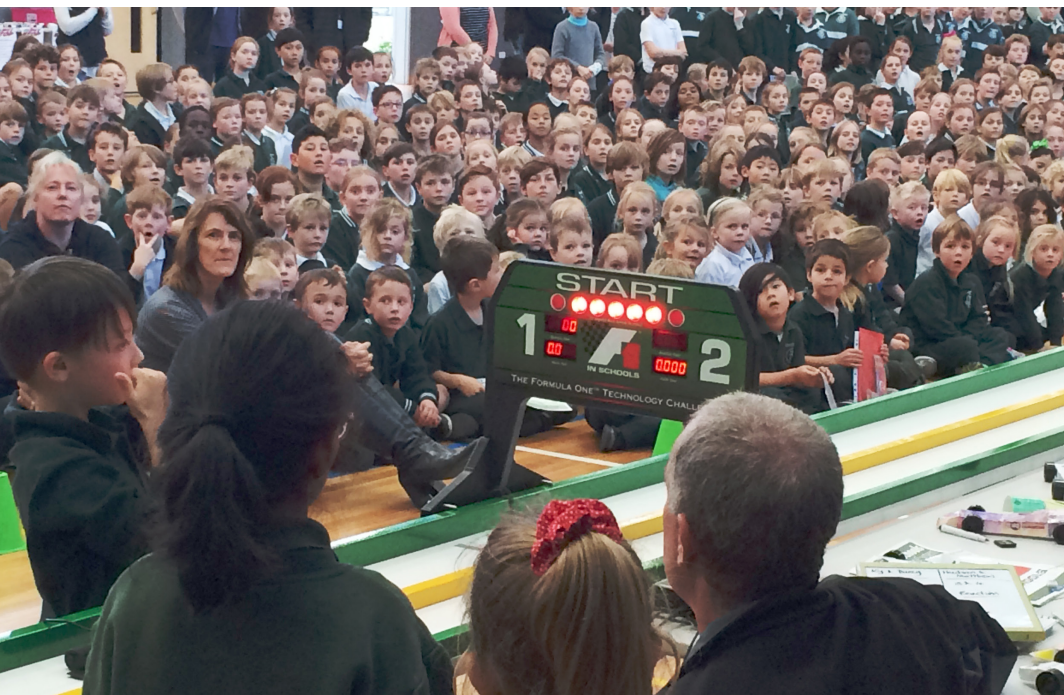
HONORARY SOLICITOR

Mr Ken B Ramsay

EXECUTIVE OFFICES

Level 2
86-90 Bay Street
Broadway NSW 2007
Telephone (02) 9212 2711
Facsimile (02) 9211 4474

www.kirbyfoundation.com.au



James N. Kirby Foundation
www.kirbyfoundation.com.au

