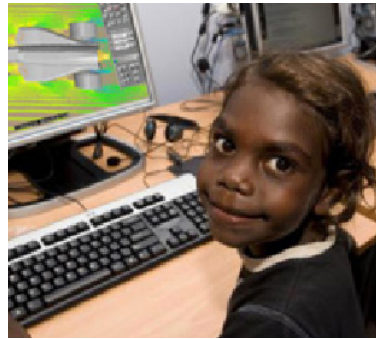
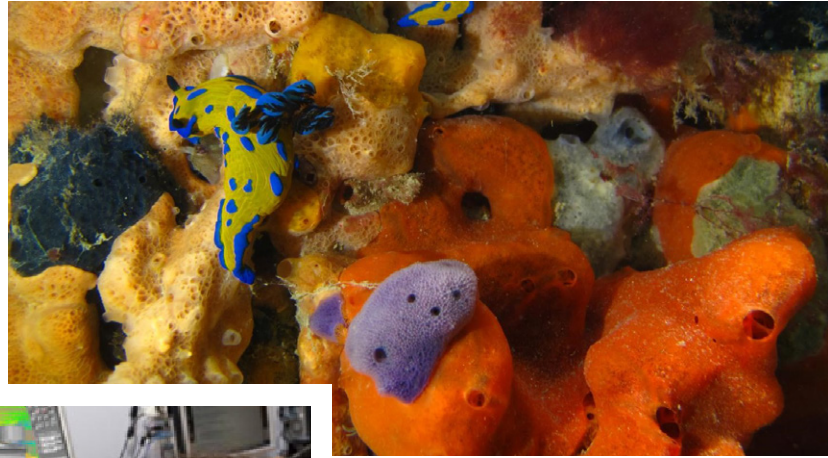
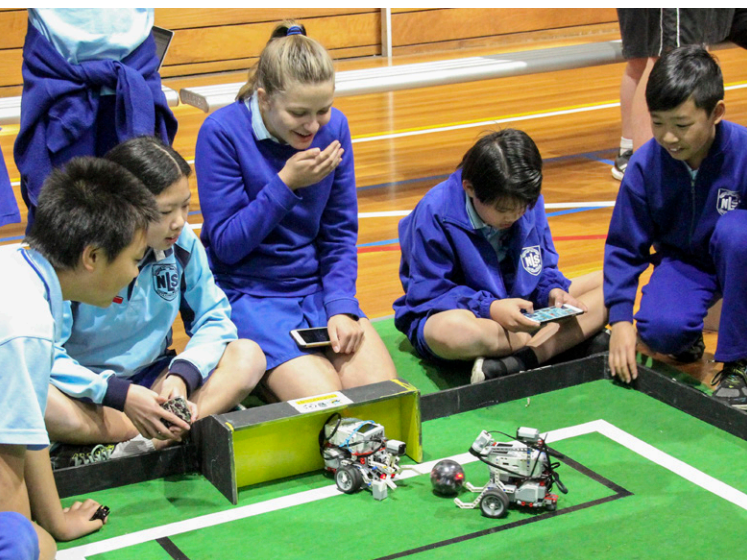
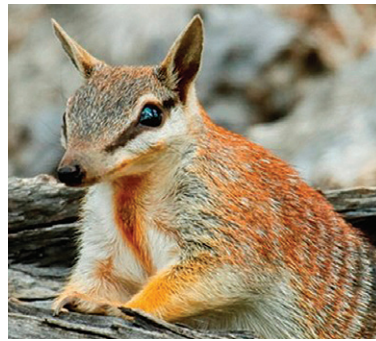




JAMES N. KIRBY FOUNDATION



2018 FIFTY-FIRST ANNUAL REPORT





Sir James Kirby CBE (1899 - 1971)

CONTENTS

| | |
|---|----|
| CHAIRMAN’S REPORT | 2 |
| GRANTS MADE - THE YEAR IN REVIEW | 5 |
| SCHEDULE OF GRANTS | 13 |
| INCOME STATEMENT | 24 |
| BALANCE SHEET | 25 |
| CASH FLOW STATEMENT | 26 |
| INDEPENDENT AUDIT REPORT TO THE TRUSTEE | 27 |
| TRUSTEE DETAILS | 29 |

The last twelve months at the James N. Kirby Foundation have been full of milestones, and it is with great pleasure that I present this report. October 17, 2017 marked the 50th anniversary of The Foundation and the event was celebrated with a dinner at The Australian Golf Club attended by the current Board, Raymond Kirby AO, third and fourth generation Kirbys, as well as the honorary and administrative team. In addition, we were delighted to host David Shannon from the Lizard Island Reef Research Foundation and Dr Stephen Hollings from the Heart Research Institute who were a special inclusion as these two organisations are two of the longest standing, multiple grant recipients.

The achievement by the Kirby Family of continued, determined and passionate support of The Foundation established by Sir James and developed by his two sons Kevin and Raymond is celebrated with great pride by the third and fourth generations. The success of The Foundation is the entire Board’s unwavering commitment to ensure Sir James’ core vision continues to be implemented with enhancements only where necessary. In the 1969 Annual Report, Sir James declared “The Directors believe that the funds of the Foundation will be utilised with the greatest effect in specialised areas rather than for disbursement to be made to established charities which receive considerable community support in the ordinary way. In seeking out specialised projects, the Directors have in mind the importance of making grants which will assist Australia to advance its skills at technical and managerial levels and advance and preserve Australia’s natural resources.” With this in mind, it is pleasing to see that the Foundation continues to champion smaller organisations and provide seed funding for projects that are able to succeed with maximum impact.

In the Annual Report of 1977, Kevin Kirby wrote that the Foundation had passed the \$1m mark in donations. In 1987 that figure rose to \$2.9m, and in 1997 \$5.9m. 10 years later in 2007, Raymond Kirby reported the figure had risen to \$10.6m. That growth has steadily continued and as at 30th June, 2018 The Foundation has donated over \$22m across its four key categories of Health; Education and Technology; Environment; Social Welfare and The Arts. An accumulated total of over 800 organisations have received a grant from The Foundation and in many cases, on-going support has been given, resulting in strong relationships that have extended for decades.

The James N. Kirby Foundation only accepts on-line applications for Small Grants - up to \$15K. Following greater levels of due diligence, larger projects that fit within the objectives of The Foundation are sourced and assessed, and below are the large grants subsequently approved by the Board in 2018:

\$60,000 - Melanoma Institute Australia

Technology for The Vectra automated imaging system (the forefront of cancer biomarker discovery) that will enable rapid triage of advanced melanoma patients into the right treatment streams.

\$50,000 - Australian Theatre for Young People

Development of a professional production of ‘Follow Me Home’ - based on young Australian’s true experiences of

homelessness - performed on stage and live-streamed, accompanied by a published script and education resources for schools as well as a video recording for future sharing.

\$50,000 - Gunawirra

‘Healing Trauma for the Aboriginal Child’, an early intervention program to help Aboriginal pre-school children adjust or learn in individual or group therapy in Lismore, Kempsey, Armidale, Rozelle and Wallaga Lake.

\$50,000 - Taronga Conservation Society Australia (Taronga Zoo)

Specialised interpretive design elements for the immersive Rainforest classroom and animal encounter space within Taronga’s new, first of its kind in the world, Institute of Science and Learning.

\$40,000 - Orygen, The National Centre of Excellence in Youth Mental Health

A 3-year study at Headspace Bondi using Orygen’s IPSed intervention for 200 young people with mental illness who require assistance with reconnecting to or staying in education.

\$26,000 - Creativity Australia

Seed funding for the ‘With One Voice’ program to establish 3 new community choirs that aim to bridge the gap between disadvantage and those more fortunate, and address the epidemic of loneliness and associated mental/physical health issues and economic disadvantage.

The Foundation receives hundreds of applications each year, that are all carefully considered. Other than those who do not comply with the specific objectives of The Foundation, the demands placed upon our resources are extremely challenging and, regrettably, many applications are denied. The Directors believe that the available funds of The Foundation have been appropriated in accordance with the objectives found on the website www.kirbyfoundation.com.au.

Audited financial statements of The Foundation for the year ended 30 June 2018 are presented in this Annual Report. The Foundation’s gross income for the year ended 30 June 2018 was \$3,011,263 including donations received from the family of \$2,097,000 with \$1,036,735 paid in grants during the year. Since its inception in 1967, grants and donations totalling \$22,048,905 have been made by the Foundation and they fall into the following categories:

| CATEGORY | 2017/2018 \$ | % | Total to 30 June 2018 \$ | % |
|-----------------------------|-----------------|------|--------------------------------|------|
| Health | \$223,721 | 22% | \$3,753,316 | 17% |
| Education and Technology | \$319,393 | 31% | \$8,748,831 | 40% |
| Environment | \$109,500 | 10% | \$1,191,847 | 5% |
| Social Welfare and The Arts | \$384,121 | 37% | \$8,354,911 | 38% |
| | \$1,036,735 | 100% | \$22,048,905 | 100% |

In accordance with the Articles of the Trustee Company, Emeritus Professor Christine E Deer AM, Dr Brian W Scott AO, Mr David W Smithers AM, and Emeritus Professor Ross D Milbourne AO retired as Directors of the company but, being eligible, offered themselves for re-election at the trustee company's Annual General Meeting.

It must be noted that most of the above Directors have been on the board voluntarily for many decades, therefore on behalf of my sister Margaret, and cousins James and Michael, I would like to extend our sincere thanks and appreciation to them for their sage guidance and assistance in allocating the income of The Foundation as a great deal of analysis is required to properly evaluate requests that are received. We also appreciate the continued contributions made by our honorary solicitor - Mr Ken Ramsay, our honorary auditor - Mr Alan Neilson, and honorary secretary - Mr Owen S Beattie. I would also like to acknowledge the considerable and compassionate contribution that Kay McDowall, Manager - Grants Administration, makes to The Foundation.



Helen J Kirby
Chairman of Trustee Directors



**JAMES N. KIRBY FOUNDATION
BOARD AND EXECUTIVES AT THE
50th ANNIVERSARY DINNER**

Back row from left

Mr Michael Kirby, Mr James R Kirby,
Ms Margaret Kirby, Dr Brian Scott AO,
Mr David Smithers AM, Emeritus
Professor Ross Milbourne AO.

Front row from left

Mr Alan Neilson, Ms Kay McDowall,
Mr Raymond Kirby AO, Emeritus
Professor Christine Deer AM,
Ms Helen Kirby, Mr Owen Beattie.

It is a compulsory condition that all
grant recipients must provide
annual progress and acquittal reports
so that the James N. Kirby board can review
the application of funds as well as the
outcomes that our donations provide.

Some of last year's grant recipients
have graciously contributed to our
Annual Report by giving further insight
into their organisation and more specifically,
their grant from The Foundation.

We are delighted to be able to profile
these organisations over the next few pages
followed by a summary of all
grants made in 2018.



The HammondCare Darlinghurst Project Site taken by a drone.

The James N. Kirby Foundation gave a significant boost of funds to the development of the HammondCare Darlinghurst Project which has commenced building the lifetime home for elderly homeless or those at risk of homelessness with complex health needs.

The latest data has revealed a 28% increase in the elderly homeless in the inner Sydney area, which in real terms is an increase from 500 people to almost 800 people.

The HammondCare Darlinghurst Project is a first for Sydney and NSW and is currently under construction, due to open in 2019.

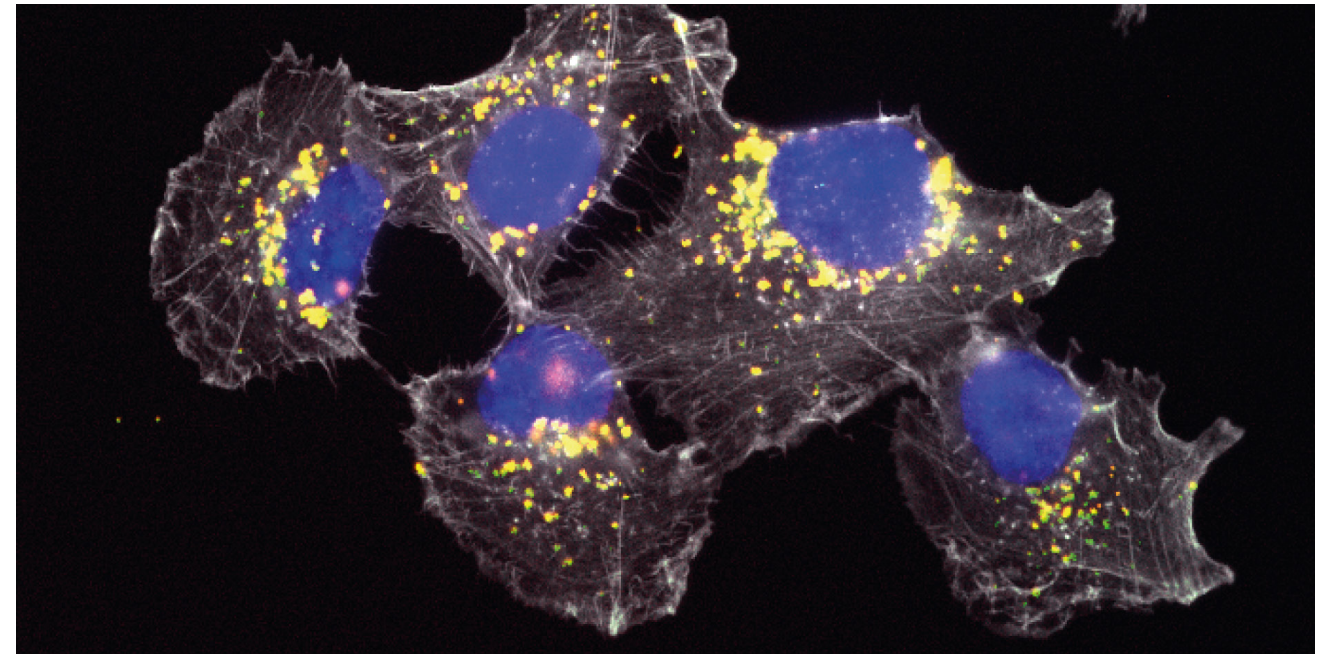
Drawing upon HammondCare’s expertise in the areas of aged care, dementia care, palliative care, rehabilitation and pain management, as well as older person’s mental health, this new service will contribute to the pressing social issue of aged homelessness in NSW by providing a permanent home for 42 individuals. Our expertise in dementia design underpins the whole development. These design principles reduce confusion and promote independence for older people, creating a home-like environment with opportunities for social engagement.

HammondCare’s model of care is based around a small cohort of residents on each floor, with a domestic kitchen designed to make the service feel like a real home. HammondCare has a philosophy of ‘real, fresh food’ as a key to better health, recovery and wellbeing for our residents. We serve freshly made, home-cooked meals in a domestic kitchen, made by the staff onsite. We encourage the freedom of residents to make their own meals, with minimum supervision, at a time that suits them and not to a regimented schedule.

Our heartfelt thanks to the James N. Kirby Foundation for supporting HammondCare in this venture, enabling us to improve the quality of life for the elderly homeless in Sydney.

Louise M Burton

Louise M Burton
Lead for the Capital Campaign



Breakthrough multi-functional nanoparticles (bright yellow, green and red dots) interacting with cells (cell nuclei shown in blue). Credit: Dr Miguel Santos.

I lead the Applied Materials Group at the Heart Research Institute. Our mission is to provide better treatment options for people with cardiovascular disease by developing the next generation of bioactive materials - materials that can bond to living tissues. These are designed to significantly improve patient outcomes.

We have been working to engineer a better coronary stent by coating the metal on the stent with material less likely to react with blood and cause harmful blood clots. We use plasma physics to create this coating, and it was during the coating process that we made a serendipitous discovery.

The process creates “plasma-dust” as a by-product, which we decided to capture and analyse. We found the “dust” to be carbon nanoparticles, which have the potential to revolutionise treatment for a range of major diseases including cardiovascular disease, cancer, Alzheimer’s and asthma.

The James N. Kirby Foundation’s investment in this discovery has enabled us to take it from a blue-sky idea to a point where we have proved the safety of our nanoparticles in the laboratory and combined them with an agent to target inflammation as a potential treatment for peripheral

artery disease (the reason people with diabetes often suffer limb loss). We have published our work in a high-profile journal and caught the attention of leading international universities and organisations, including NASA! In parallel, we are working on an adaptation of the technology to work as a diagnostic tool for remote and rural areas, where it is harder to access healthcare services, of particular relevance to our indigenous population. This has also been supported by the James N. Kirby Foundation.

After a few more years of testing, we believe this treatment should be able to become part of medical practice, making the 275 people in Australia who develop diabetes every day less vulnerable to limb loss.

We will continue to develop the potential of our nanoparticles across other diseases too.

Thank you for believing in us.

Dr Steve Wise

Dr Steve Wise
Unit Leader, Applied Materials Group



Kawai Digital Piano.

Nordoff-Robbins Music Therapy Australia is a not-for-profit organisation providing Clinical Music Therapy and Community Music programs to assist those less advantaged in our community.

We work with over 1100 people weekly, using evidence-based interventions to achieve health and developmental outcomes.

The range of clients helped through our programs includes struggling newborns and mums, children with autism, veterans with post-traumatic stress disorders, older adults with dementia, adults and children with various disabilities and/or mental health challenges, and school-aged children struggling with anxiety.

Over the last year, we have opened 2 new clinics which include 10 therapy rooms to assist in meeting increasing demand for our services. This growth resulted in a need for new instruments, and thanks to the generosity of the James N. Kirby Foundation, we have been able to purchase 2 new Kawai Digital Pianos, which are integral to our work. A lot of our clients have complex disabilities and behavioural issues which make purchasing good quality resources essential in terms of maintenance, sustainability and durability.

The following vignette provides a small insight into how valuable this funding is to us:

“Sally suffered a traumatic brain injury and her music therapy program has been centred around the piano. Piano tasks help Sally in improving finger strength, accuracy and speed. The piano MIDI function has allowed us to track Sally’s progress. Since February, we have seen an increase in playing speed by a huge 19.6 seconds in her right hand and 3.4 seconds in her left. Most significant is Sally’s continual growth in confidence and abilities related to movement, and the motivation the piano is providing. Sally informs her therapist almost weekly she loves sitting at the piano with her therapist and that it is ‘her’ time.”

Regardless of age or affliction, results achieved through music therapy are consistently astounding!

Kate Tabain
RMT - Project/Business Manager



At a time of rapid technological advancement, teachers require additional approaches to help them deliver Science, Technology, Engineering and Maths (STEM) based education and technology in the classroom.

RE-Engineering Australia Foundation, established in 1998 as a not-for-profit social enterprise, has the primary objectives of increasing students’ understanding of (STEM) pathways. REA has developed several programs running in primary and high schools which have been designed to help transform student understanding of STEM.

The competition component of REA’s programs aims to provide a platform which drives higher levels of performance from students and teachers.

Australian culture intrinsically produces excellent problem solvers, and our programs build on this innate skill by placing high importance on engagement with industry. Our students learn through both success and failure, along the way developing high levels of resilience. Since 2003 we have produced 6 World Championship teams in the largest and most complex STEM programs in the World.

REA’s programs are designed to link schools, industry, TAFE, Universities and parents in a collaborative and



entrepreneurial environment. REA currently operates in NSW, QLD, ACT, TAS, VIC, SA & WA in both public and private schools. Over the past two decades, REA’s programs have directly mentored tens of thousands of students across Australia, with many hundreds of thousands more benefiting from having ongoing access to the technology and knowledge we implement in schools.

In 2018 the Kirby Foundation supported an initiative called STEM on the Move. ‘STEM on the Move’ involves taking STEM to the schools, no matter where the location, be that in a city, regional or remote community. With equipment and technology the program facilitates equity of learning between schools in the city and the bush.

We sincerely thank the James N. Kirby Foundation. They have helped start something which will continue to grow, and have helped change the lives of thousands of young Australian’s already.

Dr Michael Myers OAM
Executive Chairman



With the help of the James N. Kirby Foundation, the Sydney Institute of Marine Science (SIMS) is developing new methods for ‘greening’ seawalls, at large scales. Seawalls are now the dominant feature of many urbanised shorelines around the world. In Sydney Harbour, more than 50% of the shoreline has been replaced by seawalls. As coastal cities continue to grow and sea-levels rise, the use of seawalls to protect property and infrastructure from inundation and erosion will increase.

As compared to the natural shorelines they replace, seawalls support reduced biodiversity of intertidal plants and animals. This is because seawalls lack key habitat features such as rock pools and crevices and because their vertical surface provides a very limited attachment space for intertidal species. With this loss of intertidal species has come the loss of their important ecological functions, including provision of food and habitat to fish, and the cleaning of water through filter-feeding.



The ecological value of seawalls can be substantially improved through green designs, that enhance the availability and quality of seawall surfaces for species to colonise. In collaboration with Melbourne-based design firm, Reef Design Lab, SIMS have developed modular tiles that can be fitted to existing seawalls cheaply and easily to enhance surface area and habitat diversity. Tiles are computer-designed and can be targeted towards particular biological communities. Tiles of different designs can be combined into a diverse array of configurations on seawalls, producing mosaics that are not only aesthetically pleasing works of art, but that enhance biodiversity and ecosystem function.



Funding from the James N. Kirby Foundation has also contributed to the establishment of a monitoring and evaluation program that is demonstrating the efficacy of this new approach in achieving the ecological goals of enhanced biodiversity and ecological function.

Melanie Bishop

Melanie Bishop
Leader, Green Engineering Working Group,
World Harbour Project



Today, like every other day in Australia, someone’s life will be devastated by a serious spinal cord injury (SCI)

The impact of a SCI on someone’s life, and on their loved ones, is catastrophic. The effects are much worse than simply not being able to walk - it robs a person of their independence and dignity through taking away bladder and bowel control, sexual function and body temperature control.

In many ways, a cure for SCI remains one of the most challenging medical problems to solve. The good news is that scientists now believe a cure to be inevitable - the key to getting us there is funding.

Of all the promising avenues of research, the most exciting results to date have been achieved by Professor Reggie Edgerton from UCLA. Prof Edgerton’s neurostimulation research involves the use of gentle electrical currents to re-awaken surviving but dormant connections in the injured spinal cord, allowing the brain and the cord to communicate once again.

Volunteers in the experiments have had their quality of life improved dramatically. They have been able to stand once again, have recovered hand movement, and have seen significant improvements in some of the secondary conditions associated with SCI that make life so incredibly difficult.



On the edge of a cure

SpinalCure is proud to have collaborated with the University of Technology Sydney and Spinal Cord Injuries Australia to establish a research program here in Sydney to further develop Prof Edgerton’s treatments for the benefit of all those paralysed by a SCI.

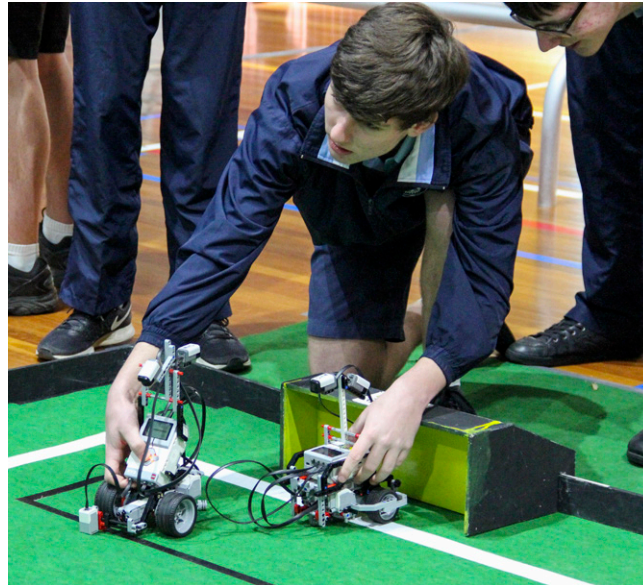
The James N. Kirby Foundation was among the first philanthropic organisations to recognise the immense potential of this program and generously provided a grant of \$35,000 (FY16), followed by a further \$25,000 (FY17), to help fund a prestigious 5-year fellowship for a top researcher to lead the neurostimulation project under Prof Edgerton’s guidance.

We are extremely grateful for the Foundation’s foresight and generosity.

On behalf of all those affected by a spinal cord injury, thank you.

Duncan Wallace

Duncan Wallace
Executive Director



“All students thoroughly enjoyed the experience of participating in Robocup Junior. Their confidence in programming the robots has grown. Students now use the robots independently in maths group activities. I think I can confidently say that some students are definitely inspired to pursue a STEM career.” Gillian, eLearning Coordinator, Dungog High School.

Since 2012, the University of Newcastle’s faculty of Engineering and Built Environment has hosted the RoboCup Junior Hunter Region competition. Bringing together local primary and secondary school students, Robocup Junior uses a hands-on approach to introduce primary and secondary school children to the fundamentals of teamwork, and complex problem solving through step-by-step logical thinking using robotics and coding to inspire and engage.

The generous support of the James N. Kirby Foundation has enabled the University to expand the RoboCup Junior competition from its Newcastle base to the NSW Central Coast, allowing 58 more students to participate, bringing total participation for 2018 to 458. Additionally, extra robots and competition equipment have been purchased for the rescue and soccer competition disciplines.

The support of the Foundation funded six robot scholarships to low-SES schools around the Hunter and Central

Coast who have never previously competed in RoboCup Junior. Four outreach workshops were also held for 196 students in low-SES locations, providing teacher mentoring and building technical skills and capacity among both teachers and students to facilitate participation in RoboCup Junior Hunter Region. Due to cost and distance, the participation of these schools was only made possible thanks to the funding from the Foundation.

Through outreach programs such as RoboCup Junior Hunter Region and, with the ongoing support from the James N. Kirby Foundation, the University of Newcastle hopes to address the decline of student participation in STEM subjects. As the program experiences continued growth, and with a focus on increasing participation of low-SES schools, RoboCup Junior will continue to engage and inspire local students to pursue their interest and, potentially, forge a career in the Science, Technology, Engineering or Mathematics fields.

Steven Weller
Acting Pro Vice-Chancellor, Faculty of Engineering and Built Environment

SCHEDULE OF GRANTS 2018

SCHEDULE OF GRANTS

MADE DURING THE YEAR, HIGHLIGHTING THE MAJOR OBJECTIVE OF EACH CONTRIBUTION PLUS AMOUNT PAID IN 2017

| HEALTH | 2018 \$ | 2017 \$ |
|--|------------|------------|
| ASYLUM SEEKERS CENTRE INC | | |
| Towards the Nutrition Program; to ensure people seeking asylum in financial hardship do not go hungry | 15,000 | 10,000 |
| AUSTRALIAN MITOCHONDRIAL DISEASE FOUNDATION | | |
| Towards the Mitochondrial Disease Telehealth Service Pilot Study | 15,000 | 10,000 |
| CENTRAL COAST KIDS IN NEED | | |
| To assist with hospital support accommodation expenses to Central Coast families of children with cancer and/or other prolonged illnesses who have to leave the local area to receive specialist support in Sydney and Newcastle Hospitals | 5,000 | - |
| CENTRAL COAST OUTREACH SERVICE | | |
| Starting Over Program; to provide household goods to financially disadvantaged families | 5,000 | - |
| CHRIS O'BRIEN LIFEHOUSE | | |
| Rapid Access Endoscopy Service: Olympus Imaging Platform. This service delivers streamlined cancer screening and diagnosis | 10,000 | 10,000 |
| HEART RESEARCH INSTITUTE | | |
| Nanoparticles as Diagnostics for Remote Indigenous Communities - towards funding for the translation of the new multi-functional nanomedicine platform into a technology to help improve point-of-care diagnostics in remote areas | 10,000 | 25,000 |
| LITTLE WINGS LIMITED | | |
| Aircraft Avionics Systems; a traffic avoidance system for the Baron Beechcraft B58 aircraft | 10,000 | - |
| MELANOMA INSTITUTE AUSTRALIA | | |
| Imaging Technology for Predictive Gene Signatures; purchase of an additional slide stainer which could allow for 200 slides per day to be analysed | 60,000 | - |
| ORYGEN, THE NATIONAL CENTRE OF EXCELLENCE IN YOUTH MENTAL HEALTH | | |
| Orygen's IPSed Project, Bondi Headspace; a 3-year study using IPSed intervention for 200 young people with mental illness who require assistance with reconnecting to or staying in education | 40,000 | - |

SCHEDULE OF GRANTS

MADE DURING THE YEAR, HIGHLIGHTING THE MAJOR OBJECTIVE OF EACH CONTRIBUTION PLUS AMOUNT PAID IN 2017

| HEALTH | 2018 \$ | 2017 \$ |
|--|------------|------------|
| POLICE AND COMMUNITY YOUTH CLUBS NSW LTD | | |
| Healthy Mind Healthy Body Program 2018; an early intervention strategy, involving 11-13 year old young people who have been referred by both the Police and the Department of Education as not attending, or inconsistently attending school | 10,425 | - |
| ROYAL FLYING DOCTOR SERVICE (SOUTH EASTERN SECTION) | | |
| To purchase a RFDS Neonatal Trolley which is used to move the 160kg Neonatal Cot between the aircraft and the hospital | 10,000 | - |
| STEWART HOUSE | | |
| To provide the opportunity for children from rural NSW to attend Stewart House; those who are in need of additional support and a break from their current circumstances | 10,000 | 14,000 |
| THE HUMOUR FOUNDATION | | |
| Clown Doctors Program at Bear Cottage; to assist with addressing the psychosocial needs of vulnerable children | 13,296 | 5,000 |
| WHY WARRIORS ORG LIMITED | | |
| Hope for Health Traditional Health Retreat to build on the skills of the Yolungu staff | 10,000 | - |
| OTHER | - | 125,800 |
| TOTAL HEALTH | 223,721 | 199,800 |

SCHEDULE OF GRANTS

MADE DURING THE YEAR, HIGHLIGHTING THE MAJOR OBJECTIVE OF EACH CONTRIBUTION PLUS AMOUNT PAID IN 2017

| EDUCATION AND TECHNOLOGY | 2018 \$ | 2017 \$ |
|---|------------|------------|
| AUTISM SPECTRUM AUSTRALIA (ASPECT) | | |
| Learning with Robots; towards the purchase of a NAO Robot for the Aspect School Program | 15,000 | - |
| BROTHERHOOD OF ST LAURENCE | | |
| Growing Learners; an early intervention program to assist young children aged 0-3 who live in very disadvantaged families | 12,000 | - |
| CEREBRAL PALSY ALLIANCE | | |
| Therapy for Rural Children; towards the cost to help cover travel and accommodation costs for rural families to participate in these life changing programs for their children | 15,000 | - |
| ENGINEERING AID AUSTRALIA | | |
| Indigenous Australian Engineering Summer School (IAESS) | 15,000 | 15,000 |
| INFORMATION CULTURAL EXCHANGE | | |
| Westmead Digital Pod, an intensive digital training program for up to 50 isolated migrant/refugee women | 13,760 | - |
| LEARNING LINKS | | |
| Reading for Life, an evidence-based program designed by a psychologist, teacher and speech pathologist to support primary school children with reading disorders | 8,895 | - |
| MUSCULAR DYSTROPHY ASSOCIATION OF NSW | | |
| M-Power Young Adult Regional Short Stay Program with a focus on encouraging young adults with a neuromuscular condition from regional and remote communities to become more independent | 14,682 | 10,000 |
| PARTICIPATE AUSTRALIA LIMITED | | |
| Supporting Young People with a Disability to Vocational Training | 8,000 | 10,000 |
| ROYAL INSTITUTE FOR DEAF AND BLIND CHILDREN | | |
| Training Teachers for Sensory Impaired Children | 10,000 | 15,000 |
| SIR DAVID MARTIN FOUNDATION | | |
| Vocational and Educational Training for Life; a residential rehab program for 16-24 year olds struggling with substance and mental health issues | 15,000 | - |

SCHEDULE OF GRANTS

MADE DURING THE YEAR, HIGHLIGHTING THE MAJOR OBJECTIVE OF EACH CONTRIBUTION PLUS AMOUNT PAID IN 2017

| EDUCATION AND TECHNOLOGY | 2018 \$ | 2017 \$ |
|--|------------|------------|
| SYDNEY HERITAGE FLEET | | |
| Employment of a Sheet Metal Fabrication Apprentice | 15,000 | 15,000 |
| SYDNEY STORY FACTORY | | |
| Big Buddy Creative Writing Programs; senior students from the local high school are trained and supported to become volunteer writing tutors | 15,000 | 15,000 |
| THE AURORA EDUCATION FOUNDATION LIMITED | | |
| Aurora Indigenous Scholars International Study Tour; provides opportunities for talented Indigenous university students and graduates | 10,000 | - |
| THE AUSTRALIAN LITERACY AND NUMERACY FOUNDATION | | |
| Early Language and Literacy Minto Project; improves the foundational literacy skills of at-risk Indigenous children in Minto, Campbelltown | 15,000 | - |
| THE NORTHCOTT SOCIETY | | |
| Pathways to Education for Indigenous Children; to support primary school aged Indigenous children attending Jarjum College in Redfern | 14,556 | 12,000 |
| THE SHEPHERD CENTRE | | |
| Listen for Literacy; a new program currently being developed by TSC to address literacy problems for deaf children | 10,000 | - |
| TWEED VALLEY EARLY CHILDHOOD INTERVENTION SERVICE | | |
| Play Connections in Community - School Readiness; provides an opportunity for children to learn, practice and develop their understanding of complex social interaction skills | 10,000 | - |
| UNIVERSITY OF NEW SOUTH WALES | | |
| Brackish Water Desalination for Remote Communities | 14,000 | 14,000 |
| UNIVERSITY OF NEWCASTLE, FACULTY OF ENGINEERING AND BUILT ENVIRONMENT | | |
| Robocup Junior Hunter Region; to address the rapid decline of interest in STEMM-related subjects among students | 15,000 | 15,000 |
| UNIVERSITY OF SYDNEY, FACULTY OF ENGINEERING AND INFORMATION TECHNOLOGY | | |
| Supporting Zero Robotics Competition; an international robotics programming challenge where Australian high school students write code and complete tasks using NASA robots on board the International Space Station | 15,000 | - |

SCHEDULE OF GRANTS

MADE DURING THE YEAR, HIGHLIGHTING THE MAJOR OBJECTIVE OF EACH CONTRIBUTION PLUS AMOUNT PAID IN 2017

| | 2018 | 2017 |
|---|---------|---------|
| EDUCATION AND TECHNOLOGY | \$ | \$ |
| UTS ART | | |
| Waraburra Nura Education Program and Website; to build an education program and website for local and visiting Indigenous students and non-Indigenous community members | 10,000 | - |
| VISION AUSTRALIA | | |
| Specialist Early Intervention Paediatric Equipment; specialised equipment, designed for children with disabilities, needed to complete the room | 10,000 | 14,000 |
| WILLIAM CAMPBELL FOUNDATION | | |
| iPads for Children and Young People; to provide iPads to children and young people who are having learning difficulties and are in need of extra educational support | 6,000 | - |
| WORLD LITERACY FOUNDATION | | |
| Let’s Read; to develop 400 locally produced bilingual digital e-books, literacy tools and educational resources in local Indigenous traditional language and in English | 10,000 | - |
| WORLD SKILLS AUSTRALIA | | |
| Australian National Training Camp | 7,500 | 15,000 |
| YOUTH OFF THE STREETS | | |
| “Step Up” Alternative Education Program; will benefit 36 disadvantaged youth | 15,000 | 15,000 |
| OTHER | - | 187,000 |
| TOTAL EDUCATION AND TECHNOLOGY | 319,393 | 352,000 |

SCHEDULE OF GRANTS

MADE DURING THE YEAR, HIGHLIGHTING THE MAJOR OBJECTIVE OF EACH CONTRIBUTION PLUS AMOUNT PAID IN 2017

| | 2018 | 2017 |
|---|---------|---------|
| ENVIRONMENT | \$ | \$ |
| ALTERNATIVE TECHNOLOGY ASSOCIATION | | |
| Consumer Advocacy on Energy Efficient Buildings; to improve the minimum standards for new and existing buildings, improve compliance and enable consumers’ market power to exercise choice for well-informed building and renovations | 6,000 | - |
| BUSH HERITAGE AUSTRALIA | | |
| Naree Station Annual Ecological Monitoring Program | 11,000 | - |
| EDO NSW (ENVIRONMENTAL DEFENDERS OFFICE LTD) | | |
| Legal Outreach Program; deliver tailored workshops to meet specific needs of communities across NSW | 10,000 | - |
| NATURE CONSERVATION COUNCIL OF NSW | | |
| Wildlife Habitat - Protect, Create, Monitor; to learn more about how to protect animals and their habitat to support their presence into the future | 10,000 | - |
| RIVERSMART AUSTRALIA LTD | | |
| Next Generation: Riversmart and Waterwise Project; to offer funds to schools from across the far west region to subsidise their travel to the Window on the Wetlands Centre in Warren | 10,000 | - |
| TARONGA CONSERVATION SOCIETY AUSTRALIA | | |
| Rainforest Immersive Classroom (Institute); to provide specialised interpretive design elements including lighting and flooring for the unique rainforest themed, multi-sensory immersive space | 50,000 | - |
| THE BOWER RE-USE AND REPAIR CENTRE CO-OPERATIVE LTD | | |
| Reuse, Repair, Renew - Hands on Help; provides practical ‘hands on’ environmental education to community members as well as inspiration, encouragement and support for the development of creative upcycling, restoration and repair projects | 7,500 | - |
| THE KARRKAD-KANJDI TRUST | | |
| Species Recovery Project West Arnhem Land; Indigenous rangers are working with an ecologist to design a monitoring program, collect baseline data, analyse it, share learnings and adapt land management strategies to protect and boost recovery of threatened species | 5,000 | - |
| OTHER | - | 129,000 |
| TOTAL ENVIRONMENT | 109,500 | 129,000 |

SCHEDULE OF GRANTS

MADE DURING THE YEAR, HIGHLIGHTING THE MAJOR OBJECTIVE OF EACH CONTRIBUTION PLUS AMOUNT PAID IN 2017

| | 2018 | 2017 |
|---|--------|--------|
| SOCIAL WELFARE AND THE ARTS | \$ | \$ |
| AUSTRALIAN THEATRE FOR YOUNG PEOPLE | | |
| Follow Me Home; a professional production based on young Australians’ experiences of homelessness called ‘Follow Me Home’ | 50,000 | 10,000 |
| AUSTRALIAN YOUTH ORCHESTRA | | |
| AYO in Concert 2018; to provide young musicians with rigorous training, artistic insight and performances in iconic venues | 10,000 | 10,000 |
| BARNARDOS AUSTRALIA | | |
| Reconnect Wellington; aims to break the cycle of homelessness by providing counselling, group work support, mediation and practical support to the whole family | 10,000 | - |
| CAMP BREAKAWAY INC | | |
| A Breakaway for Families Living with Disability; to give parents a physical and mental rest by providing complete care for the child with high medical needs and their siblings | 15,000 | 10,000 |
| CENTRE FOR DISABILITY STUDIES | | |
| Multicultural Inclusive Film Project; this film will aim to remove the stigma of disability within different cultural groups in Australia | 7,500 | - |
| CREATIVITY AUSTRALIA LIMITED | | |
| Start Up! With One Voice; to provide a seed grant to establish three community choirs in NSW in 2018 | 26,252 | - |
| EDMUND RICE CAMPS NSW | | |
| Senior Winter Camp Program; for 10-15 year olds who are experiencing disadvantage, for a chance to have fun, learn responsibility and improve social skills through activities and mentorship | 10,075 | - |
| FIGHTING CHANCE AUSTRALIA LIMITED | | |
| Accessibility Equipment for People with Disability | 15,000 | - |
| GUNAWIRRA | | |
| Healing Trauma for the Aboriginal Child; their aim is to break the life cycle of terrible trauma, by our work in inner suburbs mother’s groups, and in city and country preschools | 50,000 | - |
| HERITAGE PARK BATHURST CULTURAL PRECINCT | | |
| The Laundry Project; for the purchase of a commercial dryer and new bed linen | 10,000 | - |

SCHEDULE OF GRANTS

MADE DURING THE YEAR, HIGHLIGHTING THE MAJOR OBJECTIVE OF EACH CONTRIBUTION PLUS AMOUNT PAID IN 2017

| | 2018 | 2017 |
|--|--------|--------|
| SOCIAL WELFARE AND THE ARTS | \$ | \$ |
| HOLDSWORTH ST COMMUNITY CENTRE WOOLLAHRA INC | | |
| Drama Classes for People Living with Disability | 10,000 | 10,000 |
| KARINYA HOUSE HOME FOR MOTHERS AND BABIES INC | | |
| Capacity Building; to improve and renew a range of systems | 15,000 | 10,000 |
| KIDS GIVING BACK | | |
| Youth4Youth: A Youth Ambassador Program; a leadership program fostering the next Generation of leaders | 5,350 | - |
| MID RICHMOND NEIGHBOURHOOD CENTRE | | |
| Food Recovery Far North Coast NSW | 14,120 | - |
| MILK CRATE THEATRE | | |
| Film Making Workshops; using performing arts to change the story of homelessness | 10,000 | - |
| MISSION AUSTRALIA | | |
| Grandparents Raising Grandchildren; to support grandparents who have become fulltime custodian for their grandchildren | 10,000 | - |
| MONKEY BAA THEATRE COMPANY | | |
| Possum Magic Education Program; to enable a tailored education and access to the arts program, centered on disadvantaged young Australians | 10,000 | 10,000 |
| MULTICULTURAL COMMUNITIES COUNCIL OF ILLAWARRA INC | | |
| Multicultural Men’s Shed; to purchase a range of new tools and equipment and outdoor furniture | 5,000 | - |
| MUSICA VIVA AUSTRALIA | | |
| Music Education in Western NSW; to offer the program to 10 regionally disadvantaged Schools at a significantly reduced price | 10,000 | 15,000 |
| NORDOFF-ROBBINS MUSIC THERAPY AUSTRALIA | | |
| To purchase two Kawai CA78 Digital Pianos for the Kingswood and Annagrove clinics | 5,324 | 6,520 |
| REDKITE | | |
| Cancer Journey Program, NSW; to support children, teenagers and young adults with cancer and their families | 10,000 | 10,000 |
| RIDING FOR THE DISABLED ASSOCIATION (NSW) TALL TIMBERS CENTRE | | |
| Senses and Fun Program Support; the program is for participants with a disability and youth at risk and is centered around activities involving horses | 7,500 | - |

SCHEDULE OF GRANTS

MADE DURING THE YEAR, HIGHLIGHTING THE MAJOR OBJECTIVE OF EACH CONTRIBUTION PLUS AMOUNT PAID IN 2017

| SOCIAL WELFARE AND THE ARTS | 2018 \$ | 2017 \$ |
|---|------------|------------|
| <div>SCULPTURE BY THE SEA INC</div> <div>Access and Inclusion Program: Tactile Tours; to offer and develop free programs for and with people of all ages with a range of disability before, during and after the Sculpture by the Sea, Bondi exhibition</div> | 7,500 | 10,000 |
| <div>SPECIAL OLYMPICS AUSTRALIA</div> <div>NSW Young Athletes Program; to deliver a weekly sporting engagement program for young children with an intellectual disability across a number of sports</div> | 10,000 | - |
| <div>TAD DISABILITY SERVICES</div> <div>Chance to Ride; to enable the Occupational Therapist to travel to regional NSW and assess children with a disability at no cost to their parents/carers</div> | 10,000 | 15,000 |
| <div>THE GIRLS AND BOYS BRIGADE</div> <div>The Surry Hills Youth Service; a holistic approach to supporting young people’s transition to adulthood by providing practical programs and individual support</div> | 13,000 | 10,000 |
| <div>THE HELMSMAN PROJECT LIMITED</div> <div>Coaching Program; targets disadvantaged Year 9 boys & girls who may not have the support they need to unlock their potential and are often at risk of disengaging from school</div> | 7,500 | - |
| <div>THE MIRABEL FOUNDATION INC</div> <div>Mirabel Youth at Risk Support Program; to assist disadvantaged young people to build healthy relationships and practice positive behaviours through the implementation of this project</div> | 10,000 | - |
| <div>YOUTH INSEARCH</div> <div>Youth Empowerment Project; for at-risk youth aged 14-20 from the rural and regional areas of New England NSW</div> | 10,000 | 14,400 |
| OTHER | - | 215,300 |
| TOTAL SOCIAL WELFARE AND THE ARTS | 384,121 | 366,220 |
| GRAND TOTAL | 1,036,735 | 1,047,020 |

FINANCIAL REVIEW

2018

JAMES N. KIRBY FOUNDATION
INCOME STATEMENT
FOR THE YEAR ENDED 30 JUNE 2018

| | 2018 \$ | 2017 \$ |
|---|------------|------------|
| SURPLUS/(DEFICIT) | | |
| excluding result of fluctuation in value of investments | | |
| INCOME | | |
| Investment Income | | |
| Dividends | 491,212 | 379,248 |
| Trust distributions | 122,077 | 152,706 |
| Imputation credit refund | 163,277 | 155,526 |
| Bank interest | 100,697 | 82,521 |
| | 877,263 | 770,001 |
| Donations Received | 2,097,000 | 377,000 |
| Grant Returned | 37,000 | 0 |
| TOTAL above income | 3,011,263 | 1,147,001 |
| LESS: EXPENDITURE | | |
| Expenses | | |
| Administration Fee | 117,500 | 117,500 |
| Bank charges | 393 | 375 |
| Catering | 735 | 0 |
| Database | 4,679 | 15,829 |
| Government charges | 48 | 19 |
| Insurance cover for directors liability | 2,177 | 1,594 |
| Investment administration | 31,936 | 24,436 |
| Printing | 5,075 | 3,195 |
| Subscriptions | 2,938 | 2,400 |
| 50th Anniversary function | 22,649 | 0 |
| | 188,131 | 165,348 |
| Grants Paid | 1,036,735 | 1,047,020 |
| TOTAL above expenditure | 1,224,866 | 1,212,368 |
| NET above income | 1,786,397 | (65,367) |
| RESULT of fluctuation in value of investments | | |
| Net profit/(loss) on sale of investments | 980,316 | 376,883 |
| Net increase/(decrease) in value of investments | (302,786) | 184,905 |
| NET fluctuation | 677,530 | 561,788 |
| OPERATING SURPLUS/(DEFICIT) for the year | 2,463,927 | 496,421 |

JAMES N. KIRBY FOUNDATION
BALANCE SHEET
AS AT 30 JUNE 2018

| | 2018 \$ | 2017 \$ |
|---|------------|------------|
| CURRENT ASSETS | | |
| Cash and cash equivalents | 3,770,498 | 4,174,513 |
| Sundry debtors | 235,311 | 160,526 |
| TOTAL current assets | 4,005,809 | 4,335,039 |
| NON-CURRENT ASSETS | | |
| Investments (at market value) | | |
| Listed shares (Cost \$8,399,588 (2017 - \$7,639,857)) | 12,009,780 | 11,053,799 |
| Unlisted units (Cost \$2,463,513.64 (2017 - \$605,384)) | 2,442,572 | 609,489 |
| TOTAL non-current assets | 14,452,352 | 11,663,288 |
| TOTAL assets | 18,458,161 | 15,998,327 |
| CURRENT LIABILITIES | | |
| Creditors | (4,093) | 0 |
| TOTAL current liabilities | (4,093) | 0 |
| TOTAL liabilities | (4,093) | 0 |
| NET ASSETS | 18,462,255 | 15,998,327 |
| TRUST FUND | | |
| Opening balance | 15,998,327 | 15,501,906 |
| Operating surplus/(deficit) for the year | 2,463,927 | 496,421 |
| CLOSING BALANCE | 18,462,255 | 15,998,327 |

- NOTES:
- The financial statements have been presented in accordance with the recognition and measurement principles of applicable Accounting Standards and the Trust Deed.
 - In line with these Standards, investments are included based on market values (taken to be redemption values in the case of unlisted units).
 - Dividends from foreign investments have been included in investment income net of withholding taxes (\$385; 2017 Nil)
 - All donations received were from the Kirby family directors of the trustee, James N. Kirby Foundation Limited, and entities associated with these directors. One such entity charged the administration fee.

James N. Kirby Foundation

Cash Flow Statement

As at 30 June 2018

| | 2018 \$ | 2017 \$ |
|---|-------------|-------------|
| CASH FLOWS from operating activities | | |
| Receipts from donations | 2,097,000 | 377,000 |
| Returned grants | 37,000 | 0 |
| Dividends, franking credits, distributions and interest | 808,225 | 821,665 |
| Payments made to suppliers | (195,559) | (186,014) |
| Grants paid | (1,036,735) | (1,047,020) |
| NET CASH INFLOW/(OUTFLOW) from operating activities | 1,709,931 | (34,369) |
| CASH FLOWS from investing activities | | |
| Payments for the purchase of investments at fair value | (4,867,468) | (750,808) |
| Proceeds from the sale of investments | 2,753,522 | 1,091,804 |
| NET CASH INFLOW/(OUTFLOW) from investing activities | (2,113,946) | 340,996 |
| Net increase/(decrease) in cash and cash equivalents | (404,015) | 306,627 |
| Cash and cash equivalents at beginning of year | 4,174,513 | 3,867,886 |
| CASH AND CASH EQUIVALENTS at end of year | 3,770,498 | 4,174,513 |

James N. Kirby Foundation

INDEPENDENT AUDIT REPORT TO THE TRUSTEE

Audit Opinion

In my opinion, the accompanying financial report of James N. Kirby Foundation (the Trust):

- gives a true and fair view of the financial position of the Trust as at 30 June 2018 and of its financial performance for the year then ended; and
- is presented in accordance with the recognition and measurement principles of applicable Accounting Standards and the Trust Deed dated 17 October 1967.

Scope

The Financial Report and Trustee’s Responsibility

The financial report is a special purpose financial report comprising the balance sheet (including changes in the Trust Fund), income statement, cash flow statement, notes and the declaration by directors of the trustee for the Trust for the year ended 30 June 2018 and has been prepared solely for its trustee in accordance with the requirements of the Trust Deed. As a result, it may not be suitable for another purpose and my report should not be distributed to or used by parties other than the trustee.

The trustee of the Trust is responsible for the preparation and true and fair presentation of the financial report in accordance with the Trust Deed. This includes responsibility for the maintenance of adequate accounting records and internal controls that are designed to prevent and detect fraud and error, and for the accounting policies and accounting estimates inherent in the financial report.

Audit Approach

I conducted an independent audit in order to express an opinion solely to the trustee of the Trust. My audit was conducted in accordance with Australian Auditing Standards, in order to provide reasonable assurance as to whether the financial report is free of material misstatement. The nature of an audit is influenced by factors such as the use of professional judgement, selective testing, the inherent limitations of internal control, and the availability of persuasive rather than conclusive evidence. Therefore, an audit cannot guarantee that all material misstatements have been detected.

I performed procedures to assess whether in all material respects the financial report presents fairly, in accordance with the recognition and measurement principles of applicable Accounting Standards and the Trust Deed, a view which is consistent with my understanding of the Trust’s financial position and performance. I formed my audit opinion on the basis of these procedures, which included examining, on a test basis, information to provide evidence supporting the amounts in the financial report and assessing the reasonableness of significant accounting estimates made by the trustee or management of the Trust.

My audit did not involve an analysis of the prudence of business decisions made by the trustee or management of the Trust, nor was it designed to provide assurance on internal controls.

JAMES N. KIRBY FOUNDATION
INDEPENDENT AUDIT REPORT TO THE TRUSTEE

INDEPENDENCE

In conducting my audit, I followed applicable independence requirements of Australian professional and ethical pronouncements.

Dated at Sydney the twenty-seventh day of August 2018



Alan S Neilson
Chartered Accountant

JAMES N. KIRBY FOUNDATION
ABN 27 048 553 927

Established on 17 October 1967, the James N. Kirby Foundation is a Private Ancillary Fund listed as Item 99 in Regulation 995-1.02 of the Income Tax Assessment Regulations 1997

TRUSTEE

James N. Kirby Foundation Limited
ABN 11 008 458 277

TRUSTEE DIRECTORS

Ms Helen J Kirby - *Chairman*
Mr James R Kirby - *Vice Chairman*
Ms Margaret A Kirby
Mr Michael J Kirby
Emeritus Professor Christine E Deer AM
Dr Brian W Scott AO
Mr David W Smithers AM
Emeritus Professor Ross D Milbourne AO

MANAGER - GRANTS ADMINISTRATION

Ms Kay L McDowall

HONORARY AUDITOR

Mr Alan S Neilson - *Chartered Accountant*

HONORARY SECRETARY

Mr Owen S Beattie

HONORARY SOLICITOR

Mr Ken B Ramsay

EXECUTIVE OFFICES

Level 2
86-90 Bay Street
Broadway NSW 2007
Telephone (02) 9212 2711
Facsimile (02) 9211 4474

www.kirbyfoundation.com.au



James N. Kirby Foundation | www.kirbyfoundation.com.au